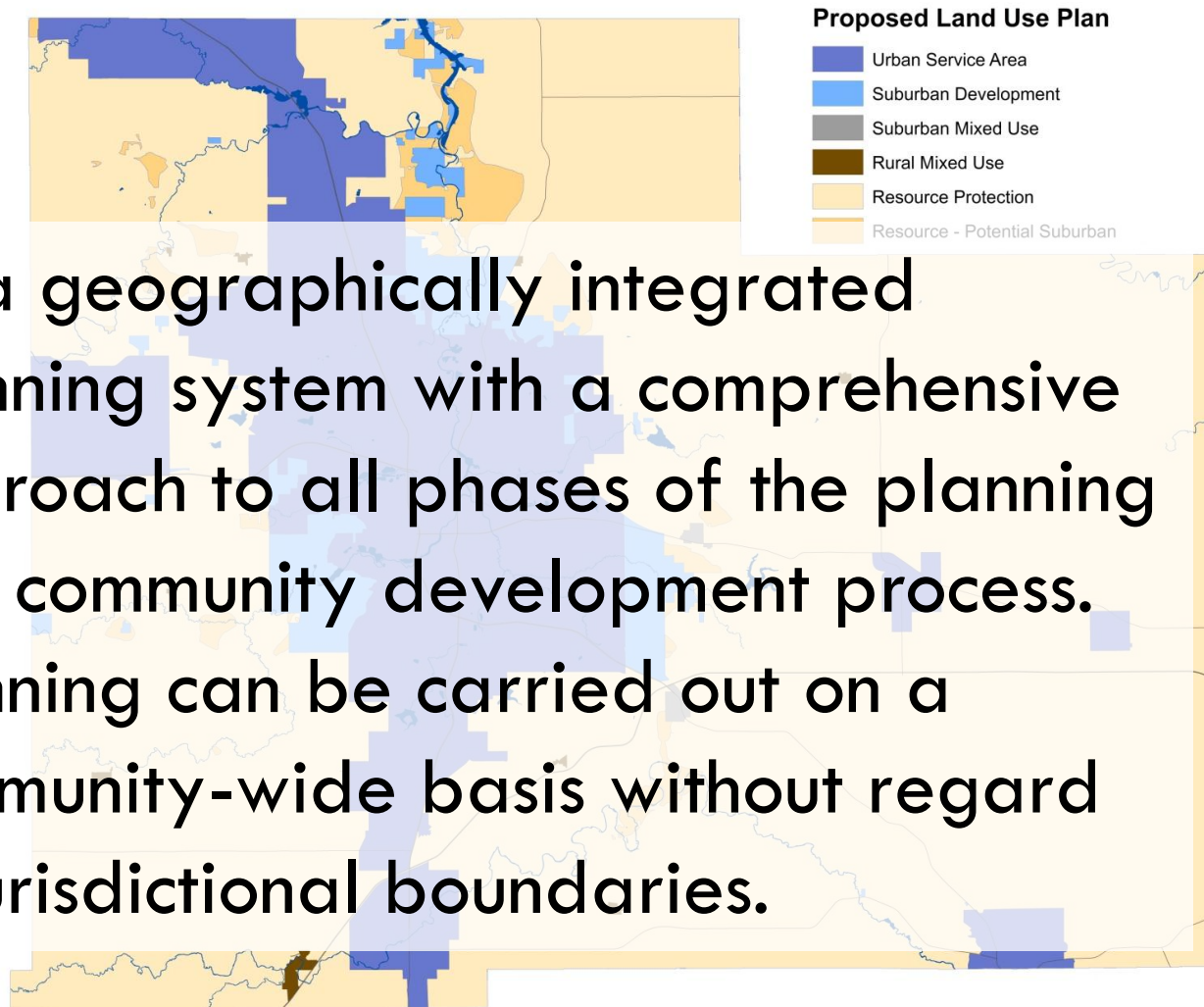


ROCHESTER COMPREHENSIVE
PLANNING – BACKGROUND
& UPDATE



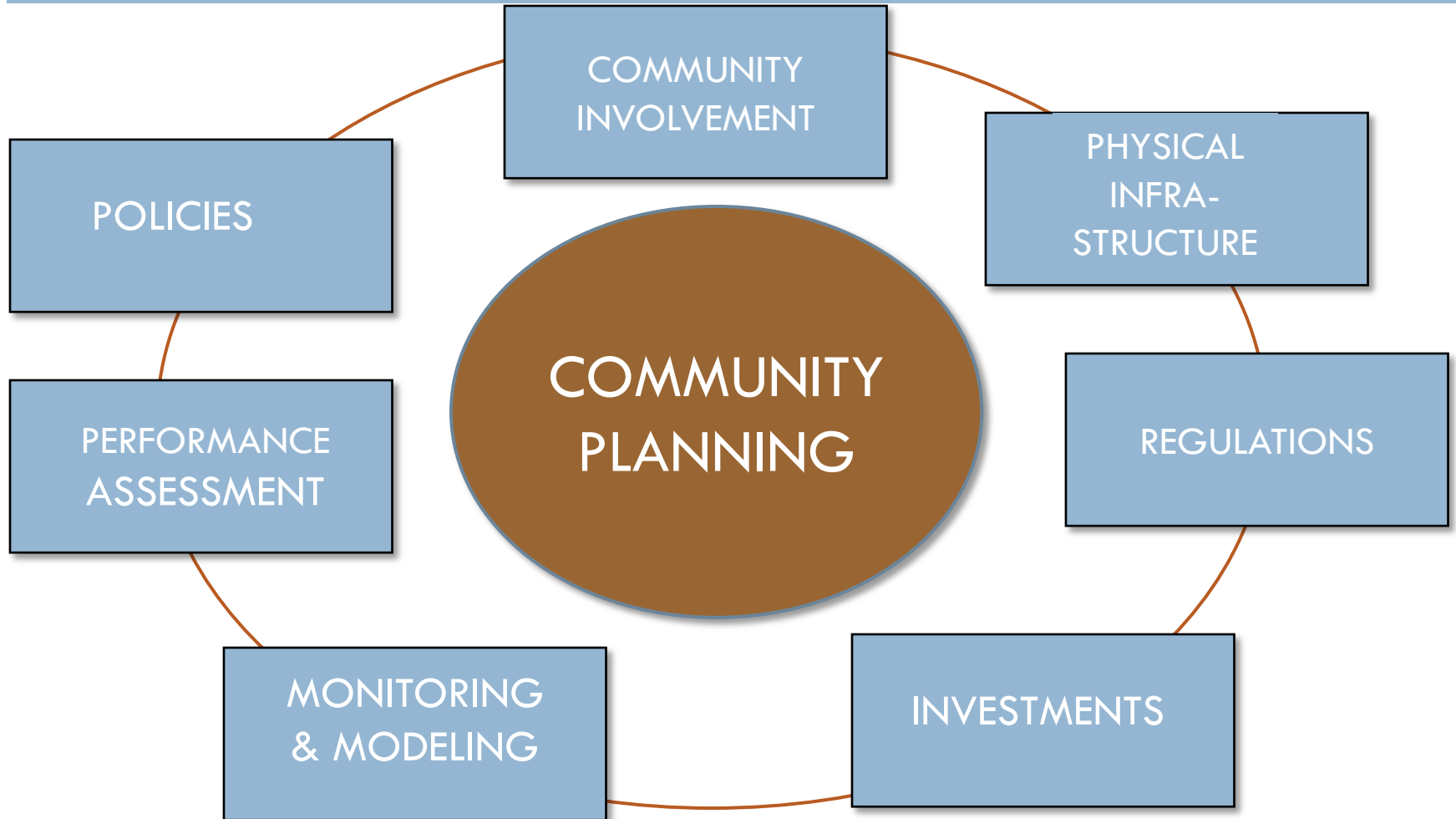
Integrated Community Planning System



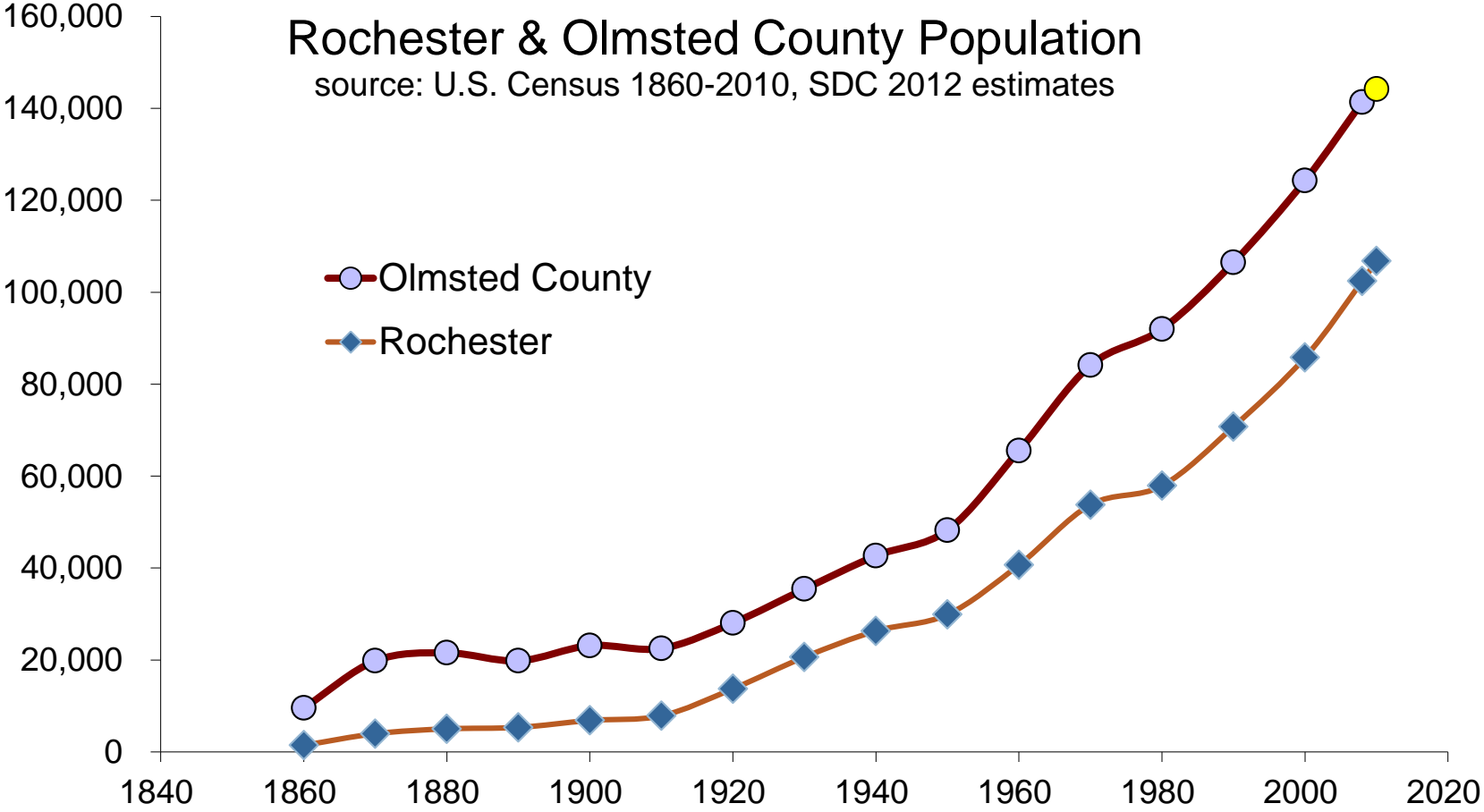
Rochester
Olmsted County
ROCOG

... a geographically integrated planning system with a comprehensive approach to all phases of the planning and community development process. Planning can be carried out on a community-wide basis without regard to jurisdictional boundaries.

Integrated Planning



Historic Growth



Future Uncertainty – Plan Update

- Changing demographic context – double whammy of the population structure
- DMC employment growth – focus on knowledge workers & community livability, infrastructure needs
- Fiscal constraints
- Density, mixed use, and transit oriented development

Consultant Selection

- 2 Stage Process
 - RFQ
 - Prospectus

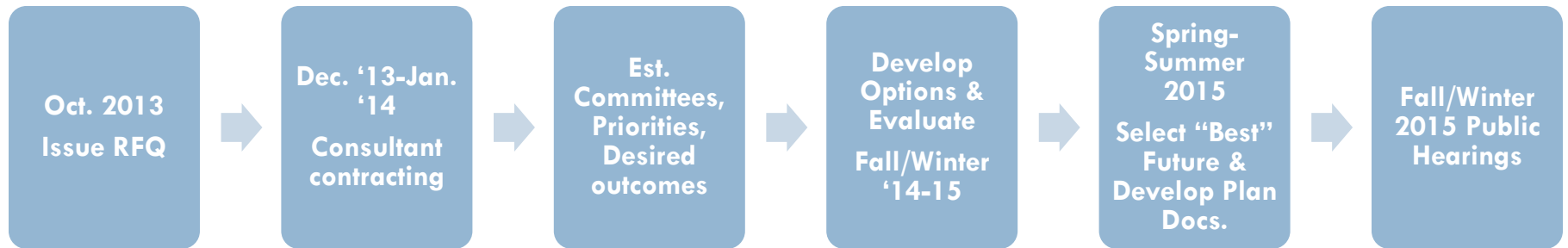
- DMCC
 - Representation
 - Coordination

Approach



- Agency & Community Collaboration
- Community Representation - Committee & Diverse Interests
- Integrated Infrastructure, Land Use & Transportation Issue Areas
- Develop Goals & Priorities (Desired Outcomes)
- Evaluate Options, Consequences, Selection
- Plan & Policy Changes
- Public Hearings

Schedule



DMC EDA/DMCC Participation & Coordination

Community & Diverse Stakeholder Interest Participation & Coordination