



DMC  
Destination  
Medical Center

# DMCC Board Meeting

10/18/2019

---

# Downtown Circulator Locally Preferred Alternative

**Destination Medical Center  
Corporation Board of Directors Meeting  
October 18, 2019**



# Downtown Circulator Locally Preferred Alternative

## DMC Development Plan & City Comprehensive Plan



### DEVELOPMENT PLAN - VOL. I

DESTINATION MEDICAL CENTER  
ROCHESTER, MINNESOTA

VOLUME I - EXECUTIVE SUMMARY AND PHASE I STRATEGIES  
APRIL 23, 2015



City of Rochester, Minnesota

April 2018



DMC  
Destination  
Medical Center

# Downtown Circulator Locally Preferred Alternative

## Integrated Transit Studies



Transit Circulation Study



Street Use and Operations Study



Parking and TDM Study



City Loop Study

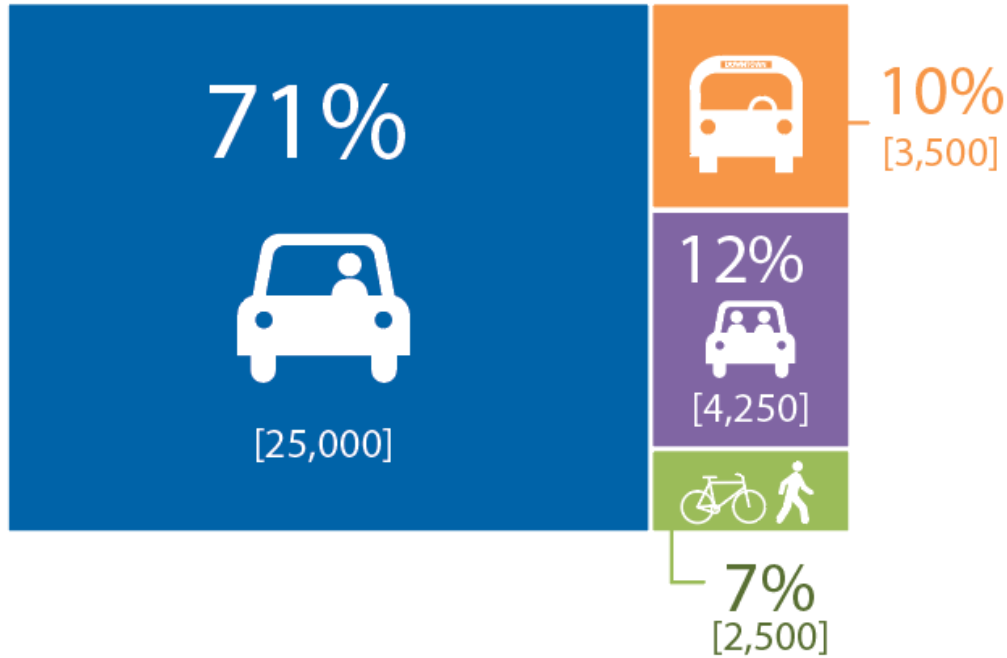


DMC  
Destination  
Medical Center

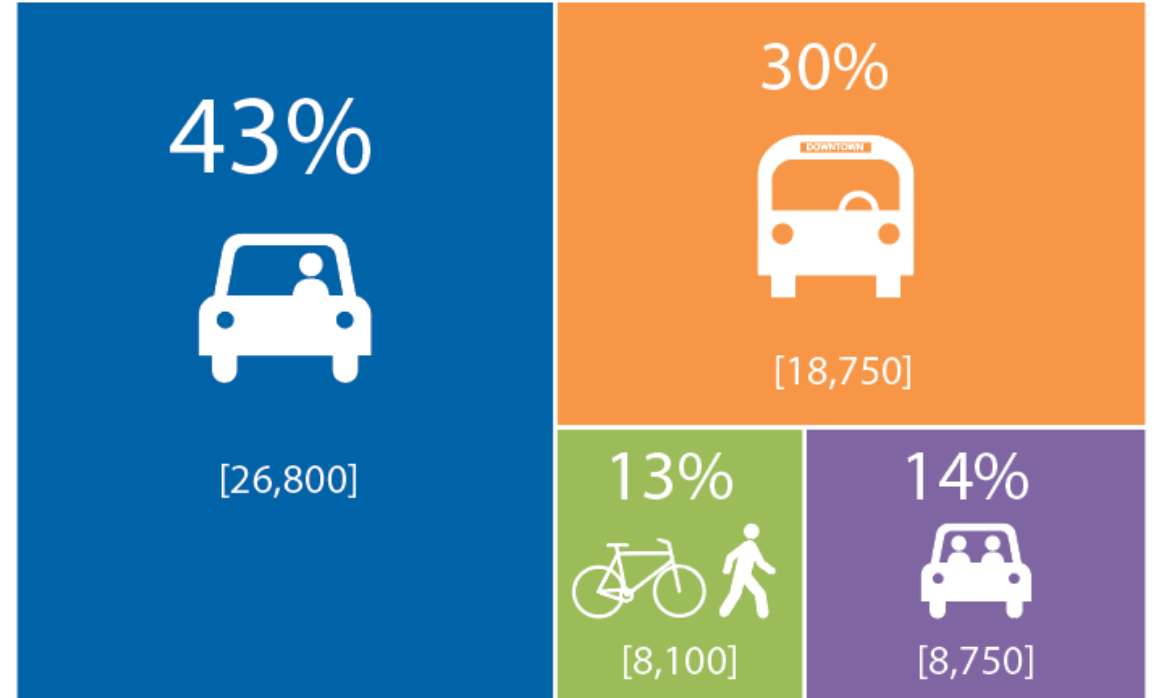
# Downtown Circulator Locally Preferred Alternative

## Mode Shift – Reducing Single Occupancy Vehicles

Today  
35,250 Daily Commuters



2040 Target  
62,400 Daily Commuters

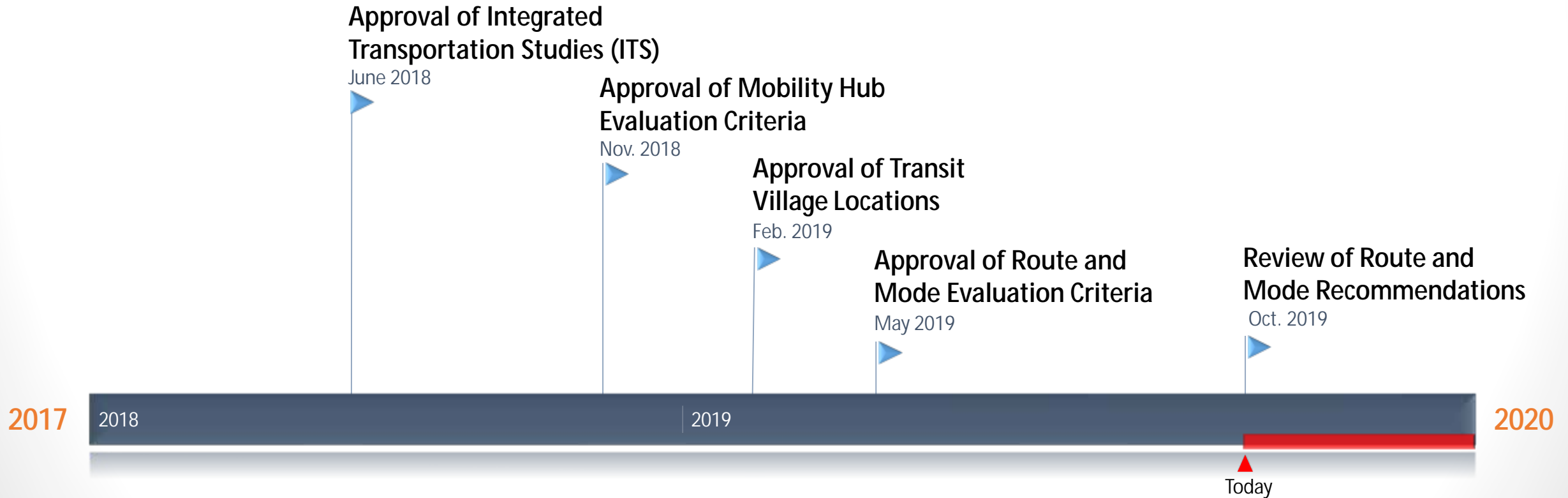


■ Drive Alone   ■ Carpool   ■ Transit   ■ Walk Bike



# Downtown Circulator Locally Preferred Alternative

## Circulator Project Timeline To Date



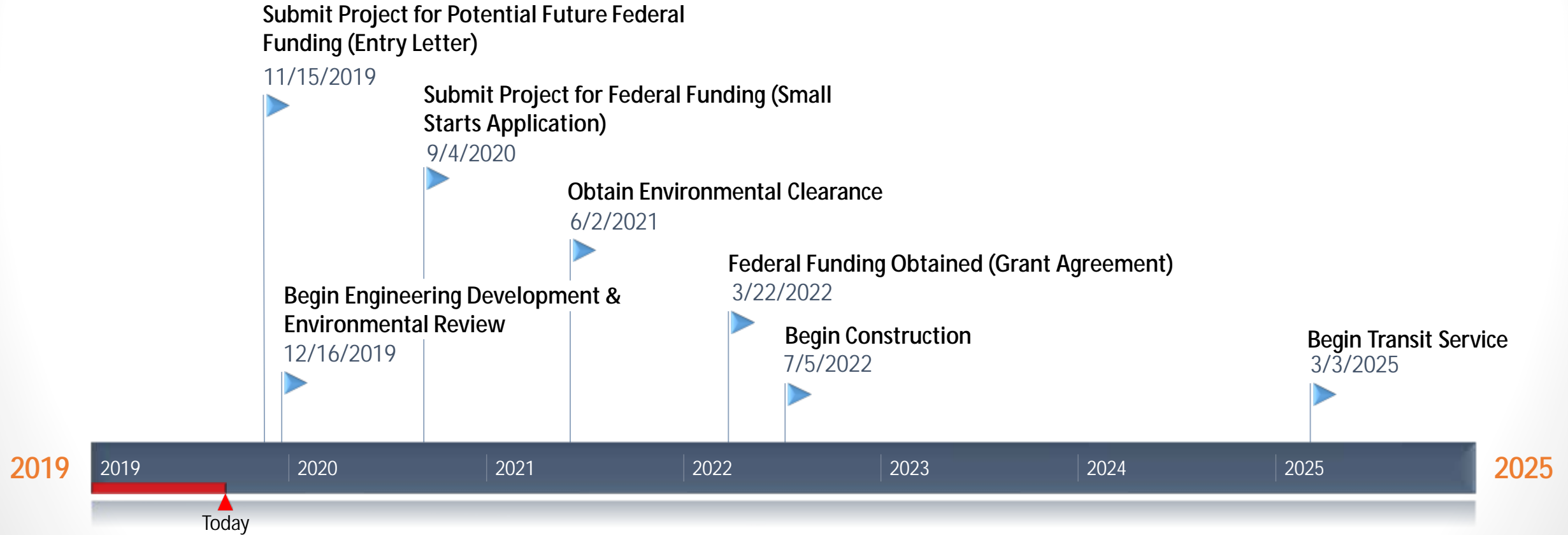
# Downtown Circulator Locally Preferred Alternative

- Today's Purpose
  - Act on staff recommendation for Transit Circulator
    - Route: Broadway
    - Mode: High Amenity Rapid Transit



# Downtown Circulator Locally Preferred Alternative

## Circulator Project Timeline





# Downtown Circulator Locally Preferred Alternative

## Federal Transit Administration (FTA)--Small Starts Application September 4, 2020

- **Environmental Analysis:**

- Neighborhood impact
- Natural Environment impact
- Traffic impact

- **Development agreements:**

- Mayo Clinic
- Olmsted County

### **Preliminary Design:**

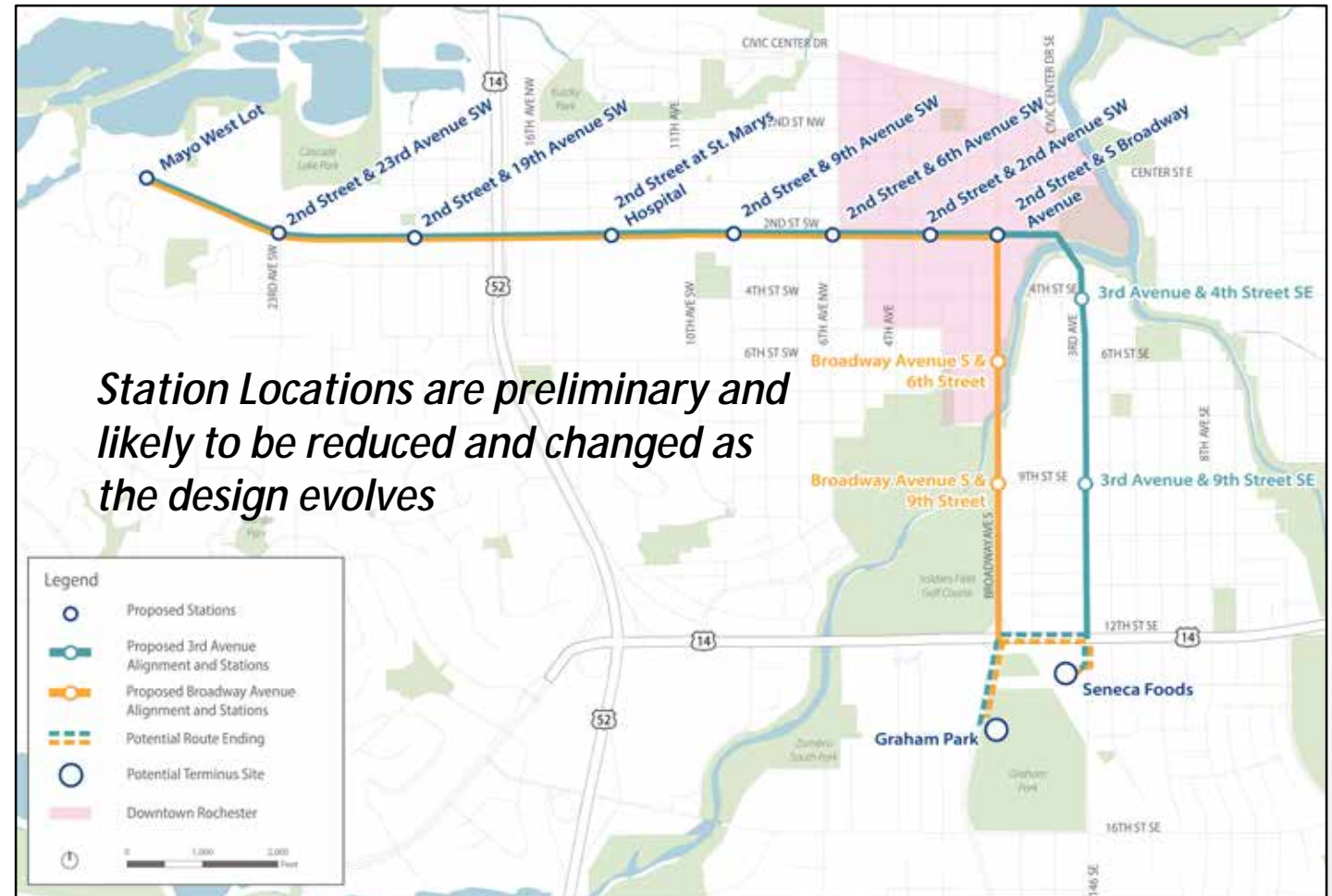
- Station Locations
- Detailed Cost Estimates
- Ridership



# Downtown Circulator Locally Preferred Alternative

## Alternatives

- **Alternative 1**
  - RT on 2nd Street and 3rd Avenue
- **Alternative 2**
  - RT on 2nd Street and Broadway
- **Alternative 3**
  - Streetcar on 2nd Street and 3rd Avenue
- **Alternative 4**
  - Streetcar on 2nd Street and Broadway



# Downtown Circulator Locally Preferred Alternative

## Modes Under Consideration Rapid Transit (RT)



## Modern Streetcar



Visualization of Circulator in Rochester- 2nd St and 6th Ave



# Downtown Circulator Locally Preferred Alternative

## 2019 Public Engagement

- Thursdays Downtown
- Presentations and discussions with community organizations
- Survey
- DMC Lobby Talks



# Downtown Circulator Locally Preferred Alternative

## Evaluation Criteria

### • Ridership

- Daily ridership
- Zero-car households
- Bus network compatibility
- Connections to key destinations

### • Costs

- Capital
- O+M
- Cost per rider

### • Economic Development

- Available land
- TOD
- Land use plans
- Existing pop. and employment
- Future pop. and employment

### • Environmental Impact

- Historic/cultural resources
- Park, Right-of-way impacts
- Pedestrian/bicycle network



**DMC**  
Destination  
Medical Center

# Downtown Circulator Locally Preferred Alternative

## Route Analysis: Transit Line Route Selection

### Two assessed routes:

- Broadway Avenue
- Third Avenue SE

### Similarities:

- Bicycle connectivity
- Route development costs
- Ability to create a healthy and active community
- Jobs within ½ mile radius
- Low impact to park land



# Downtown Circulator Locally Preferred Alternative

## Route Analysis

### Broadway Ave.

Opportunity	Challenge
Access to Soldiers Field, future UMR campus, and Discovery Square	Less desirable access for neighborhoods adjacent to Third Avenue
Primary transit corridor with TOD zoning	Vehicle impacts associated constructing a designated transit lane.
Greater consistency with land use plans (City comp. plan, DMC plan, others)	Disconnection of some parcels due to railroad & river.

### Third Ave. SE

Opportunity	Challenge
Better Access to Government Center, City Hall, Library and Civic Center	Current zoning not as conducive to TOD as Broadway Ave.
Access to neighborhoods adjacent to Third Avenue	Not consistent with current land use plans
	Neighborhood impact of construction and future redevelopment



# Downtown Circulator Locally Preferred Alternative

## Transit Line Mode Selection

### Two assessed modes:

- Modern Streetcar (Streetcar)
- Bus Rapid Transit (Rapid Transit)

### Similarities:

- Low impact to park land
- Operations
  - Travel time
  - Station wait times
  - Fixed routes
  - Dedicated lanes of travel
- Economic Development



DMC  
Destination  
Medical Center



# Downtown Circulator Locally Preferred Alternative

## Transit Line Mode Selection

Rapid Transit Compared to Streetcar		
Evaluation Criteria	Rapid Transit	Streetcar
Capital cost	X	
Weather Disruptions		X
Mode Appeal		X
Land Impact	X	
Visual Impact	X	
Noise & Vibration	X	
Implementation Schedule	X	



# Downtown Circulator Locally Preferred Alternative

## Staff Recommendation

- High Amenity Rapid Transit
- Broadway



# Downtown Circulator Locally Preferred Alternative

## Staff Recommendation

### User Experience Similar

- Level Boarding
- Quick Loading and Unloading; and
- Station Based Fare Payment

### Future Flexibility

- Future Adaptation
- Response to Route Disruptions

### Feasibility

- Cost
- Competitive FTA Application

### Integration with Previous Plans

- Consistent with 2024 Comprehensive Plan
- TOD Zoning

### Economic Development & Neighborhood Impact

- UMR/REC Zone
- Discovery Square
- Minimizes Neighborhood Disruptions



# Downtown Circulator Locally Preferred Alternative

## Rapid Transit Features

### Dedicated Lanes



Runningway improvements can vary. Ideally, runningways would be exclusive to only transit vehicles; however, in more constrained areas, vehicles operate in mixed traffic with minor spot improvements.

### Off-Board Fare Collection



Off-board fare payment speeds boarding and increases convenience. Fare enforcement enhances accountability.

### Identity / Branding



Off-board fare payment speeds boarding and increases convenience. Police enforcement enhances security.



# Downtown Circulator Locally Preferred Alternative

## Rapid Transit Features

### Unified Station Design



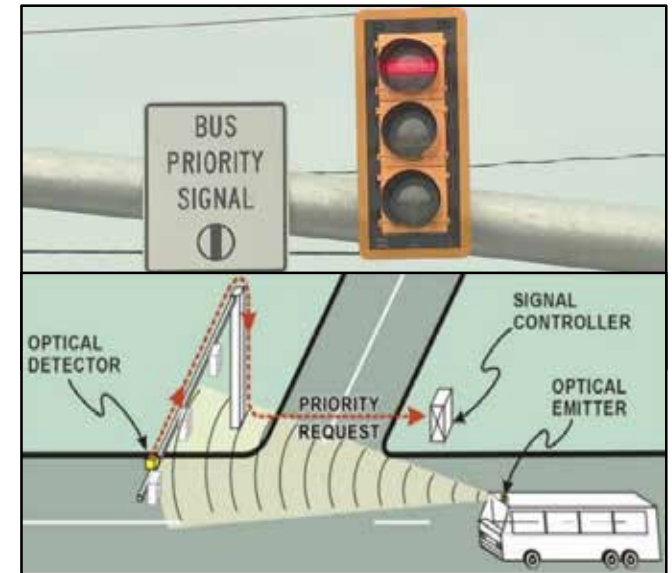
Stops are upgraded to premium stations with enhanced amenities and information kiosks.

### Specialized Electric Vehicle Design



Electric Vehicles have a unique look that is distinct from regular local and express services. Vehicles have multiple doors.

### Signal Priority



Signal priority allows vehicles additional green time to minimize delay and increase speed.



# Downtown Circulator Locally Preferred Alternative

## Rapid Transit Features

### Station Size & Amenities



Stations and boarding platforms are sized to projected passenger demand and available space. Amenities will include:

- Level Boarding,
- Transit Information,
- Snow Melt Systems, and
- Radiant Heating.

### Service Plans / Frequency



**Rapid Transit**  
Every 10 Minutes

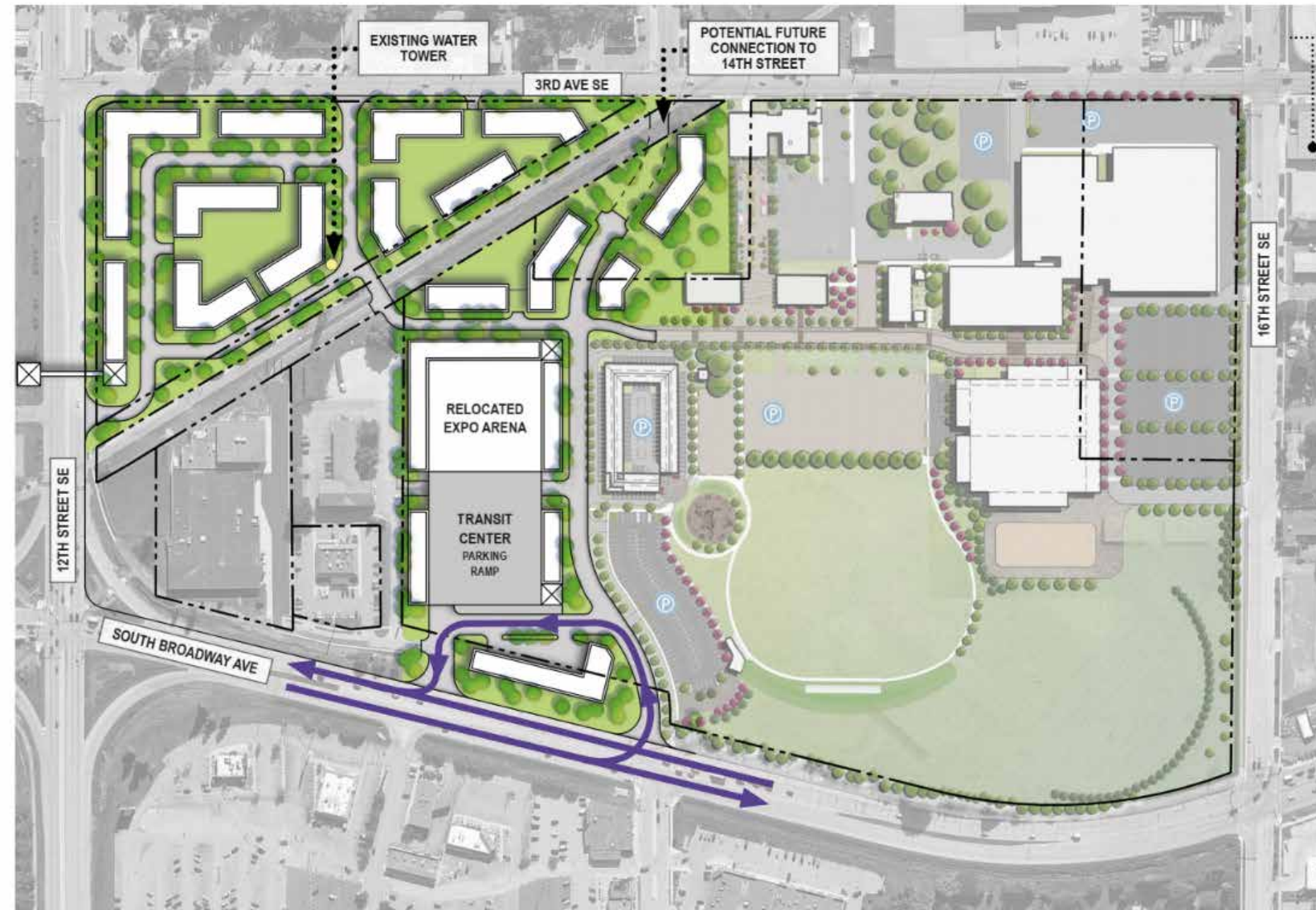


**Local Service**  
Every 30-60 Minutes

Limited stop service plans respond to corridor demand. Vehicles would run every 10 minutes or better, 7 days a week.



# East Transit Village Concept



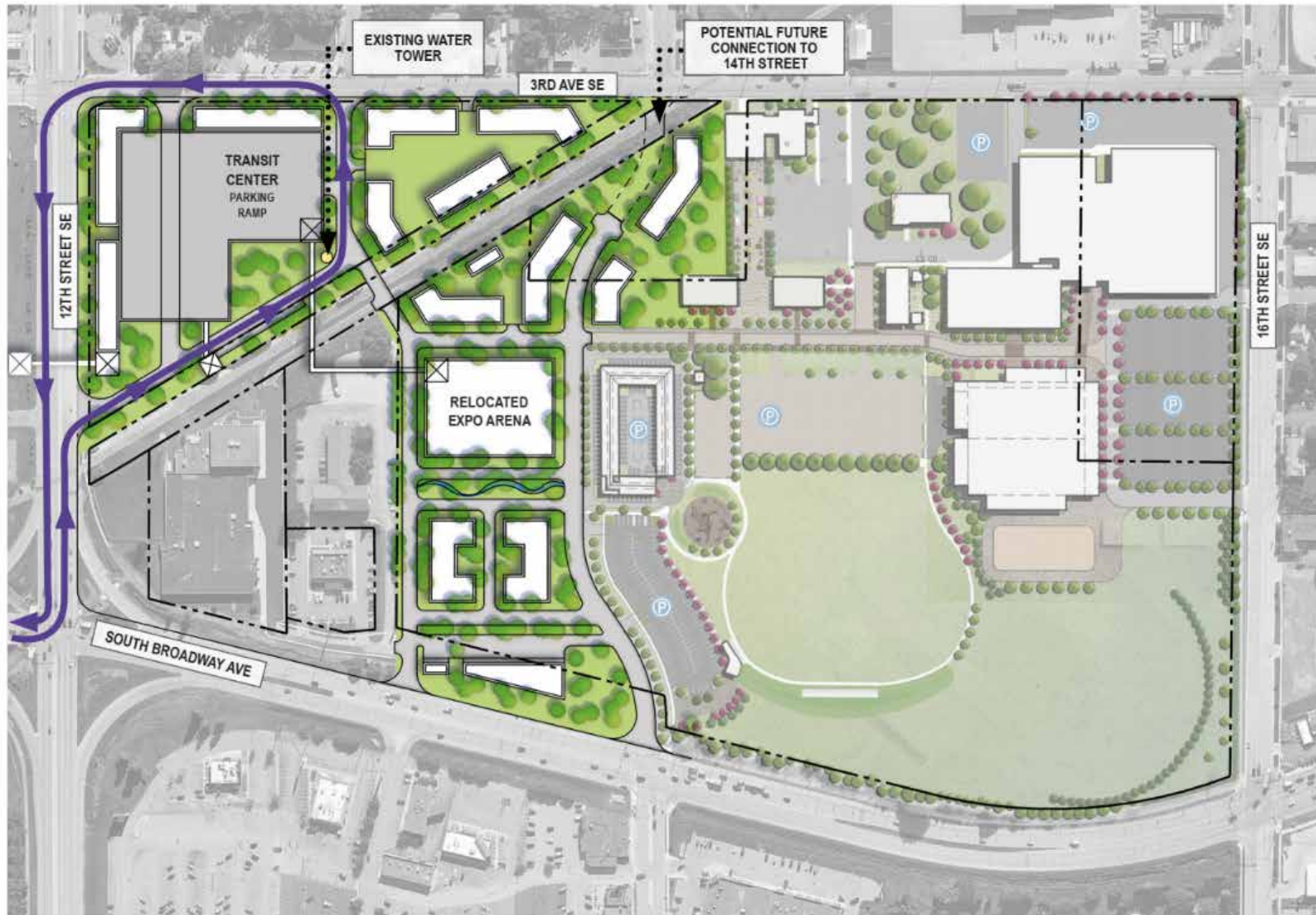
**EAST TRANSIT VILLAGE**  
BROADWAY AVENUE STATION

09.23.2019



**DMC**  
Destination  
Medical Center

# East Transit Village Concept



## EAST TRANSIT VILLAGE

3RD AVENUE STATION HYBRID

09.23.2019



**DMC**  
Destination  
Medical Center



# Downtown Circulator Locally Preferred Alternative

## 2019 Locally Preferred Alternative (LPA) & Entry Letter Schedule

- September 23
  - City Council Study Session - COMPLETE
    - LPA Review
- October 1
  - Olmsted County Board Discussion
- October 15
  - Olmsted County Committee of the Whole
- October 18
  - DMC Corporation Board Meeting
    - LPA Approval
- October 21
  - City Council Meeting
    - LPA Approval
    - Project Development Financial Commitment
- Post October 21
  - Submit Entry Letter
    - LPA
    - PD Financial Commitment
  - Submit Class of Action for the Environmental Review
- December 2019
  - Procure Engineering Team for Project Development
- October 2019 - October 2020
  - TOD Planning Grant: Station Area Planning





DMC  
Destination  
Medical Center

# 2020 DMC Corporation Funding Request

---



# Funding Request Components

- Capital Improvement Program
- DMC EDA + City Staff Workplan and Budget
- DMCC Operating Budget
- Working Capital Loan



# Process

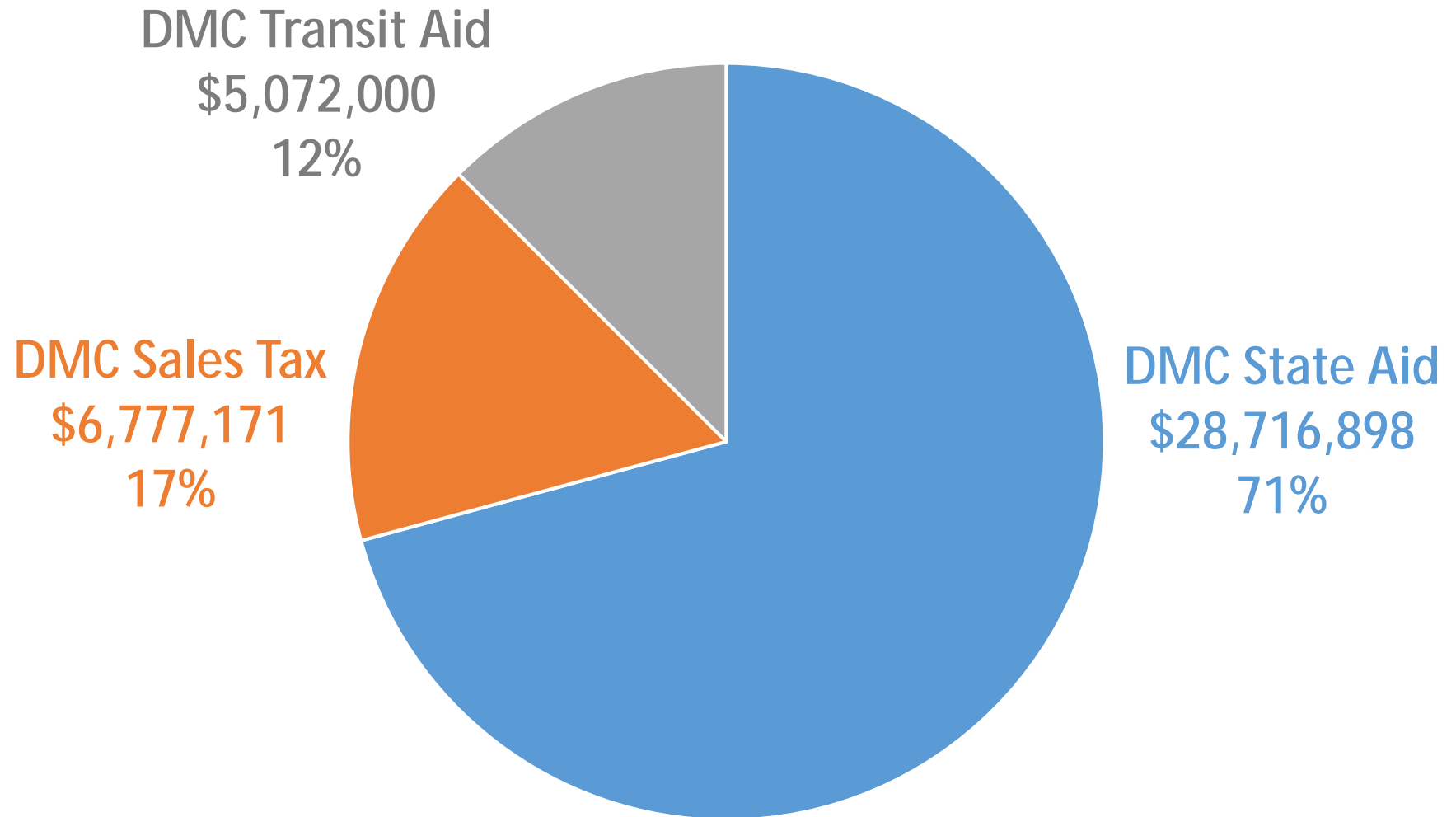
- June/July: DMC EDA + City Staff
- August: Board Volunteer Advice
- October: Board Consideration
- November: Rochester City Council Approval



# Destination Medical Center 2020 Capital Plan

\$40,556,069

## DMC FUNDING SOURCES

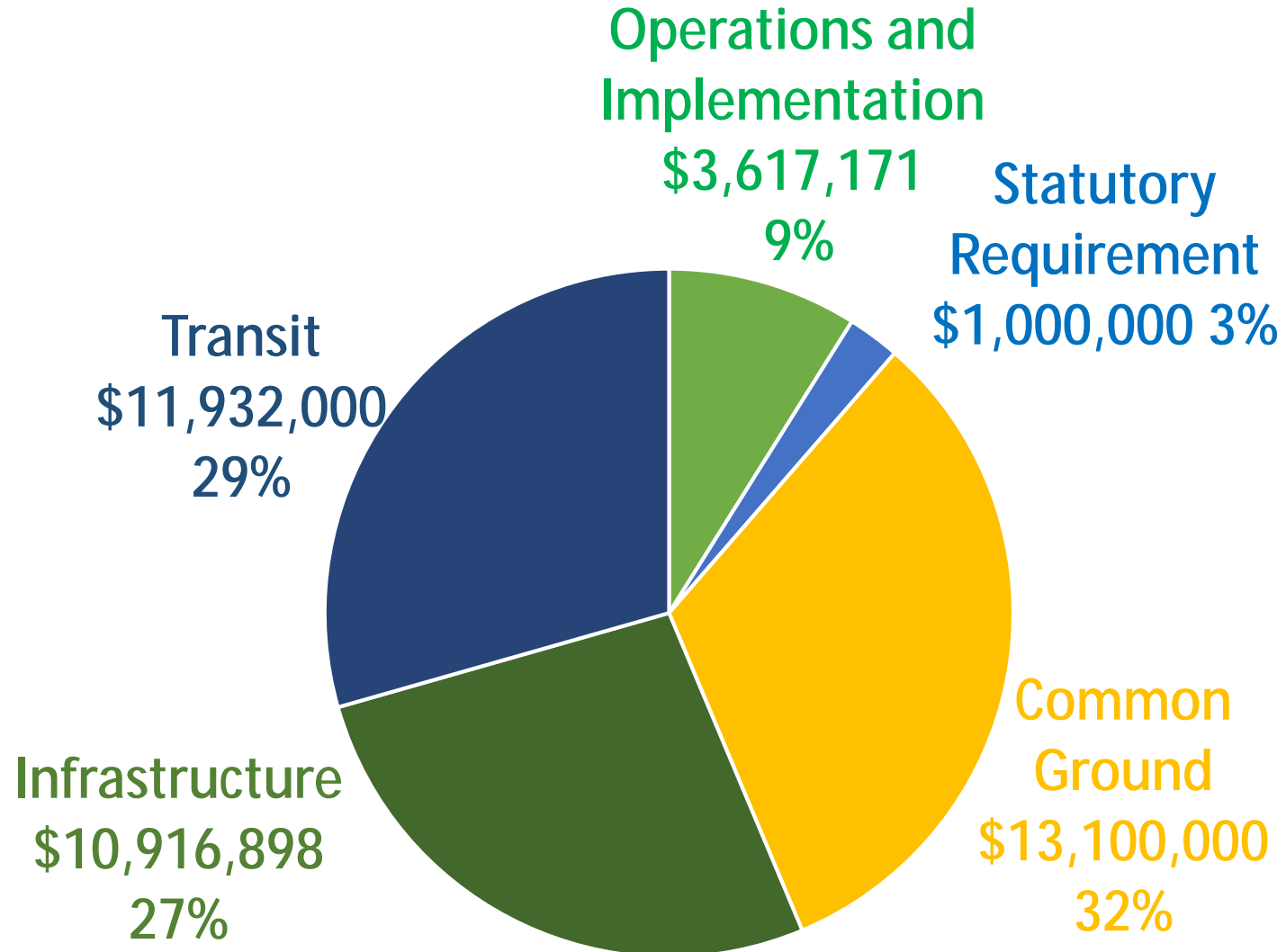




# Destination Medical Center 2020 Capital Plan

\$40,556,069

## DMC FUNDING USES





DMC  
Destination  
Medical Center

# DMC EDA Updates

---



# Updates

- Heart of the City
- Chateau Theatre
- Discovery Square
- Affordable Housing
- Development Plan Five Year Update