

# DISCOVERY WALK

DISCOVER **NATURE** / DISCOVER **INNOVATION** / DISCOVER **COMMUNITY** / DISCOVER **PLAY**

## COEN+PARTNERS

Knutson

Kimley-Horn

Latent Design

White Space

Community Co-Designers

Artist Team

EZ Fabricating



CITY OF  
**ROCHESTER**  
MINNESOTA

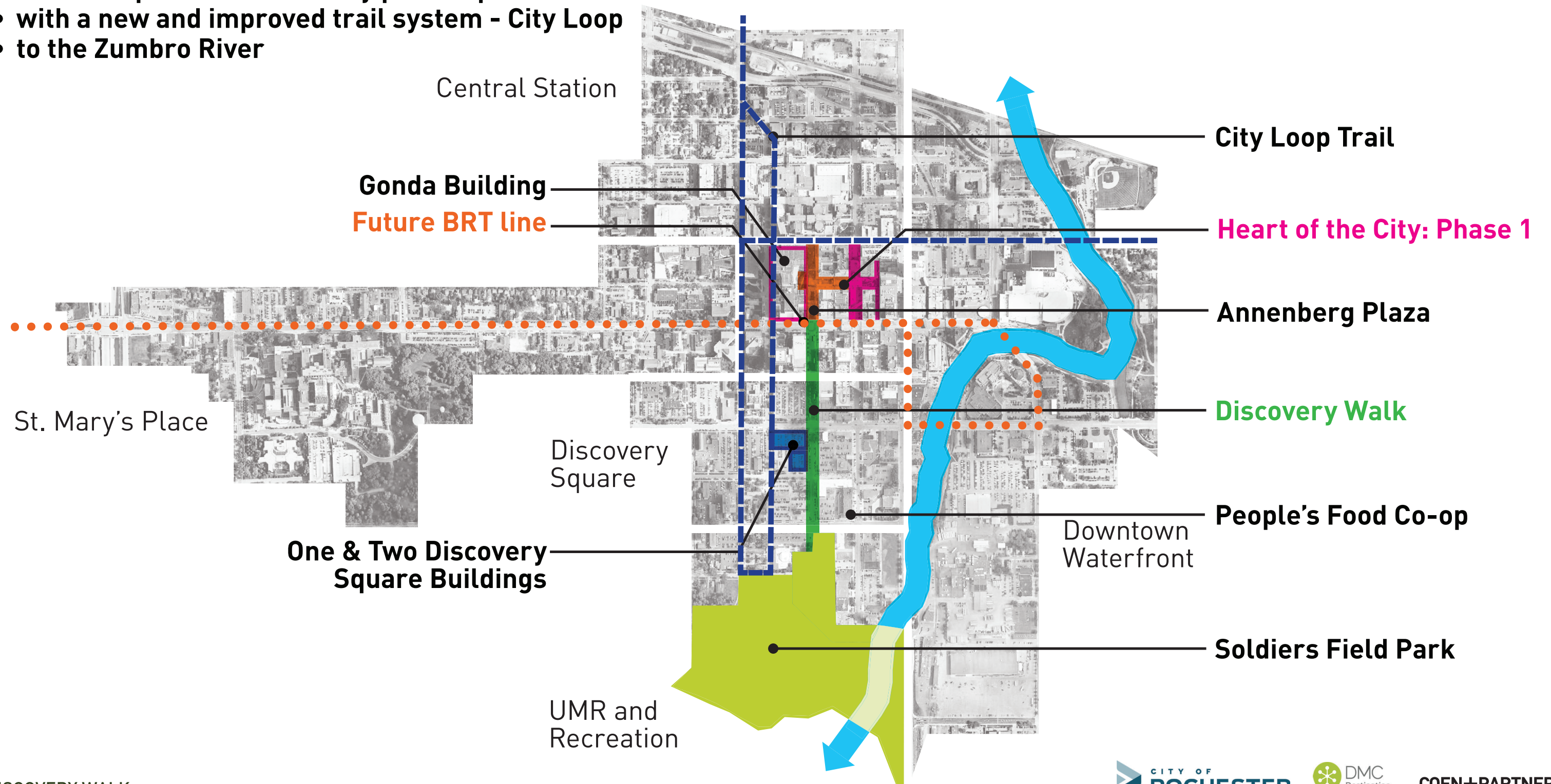


DMC  
Destination  
Medical Center  
Rochester, MN

# PLANNING FOR THE FUTURE BY CREATING A **CONNECTED CITY!**

## CONNECTING THE COMMUNITY...

- to the outdoors
- from Mayo and 2nd Street to Soldiers Field Park
- through improved public transportation
- with new pedestrian friendly public spaces
- with a new and improved trail system - City Loop
- to the Zumbro River





# PROJECT GOALS

## DISCOVERY WALK WILL...

1. Feel like a park
2. Be flexible for access + events
3. Promote health + wellness + innovation
4. Connect Soldiers Field, Heart of the City, Mayo Clinic, and 2nd Street
5. Provide a unique program + experience
6. Be accessible and inclusive to everyone
7. Support future development





DISCOVERY WALK HAS A LANDSCAPE THAT CELEBRATES THE LOCAL ECOLOGY WHILE PROVIDING PLACES TO **SIT, DINE, WALK, AND CONNECT WITH EACH OTHER.**



View of 2nd Ave looking south from 5th St

DISCOVERY WALK



DISCOVERY WALK BUILDS UPON INVESTMENT IN A **NEW INNOVATION DISTRICT**, PROVIDING A NETWORK OF OUTDOOR WORK AND PLAY SPACES TO SUPPORT THOSE WHO WORK AND VISIT.

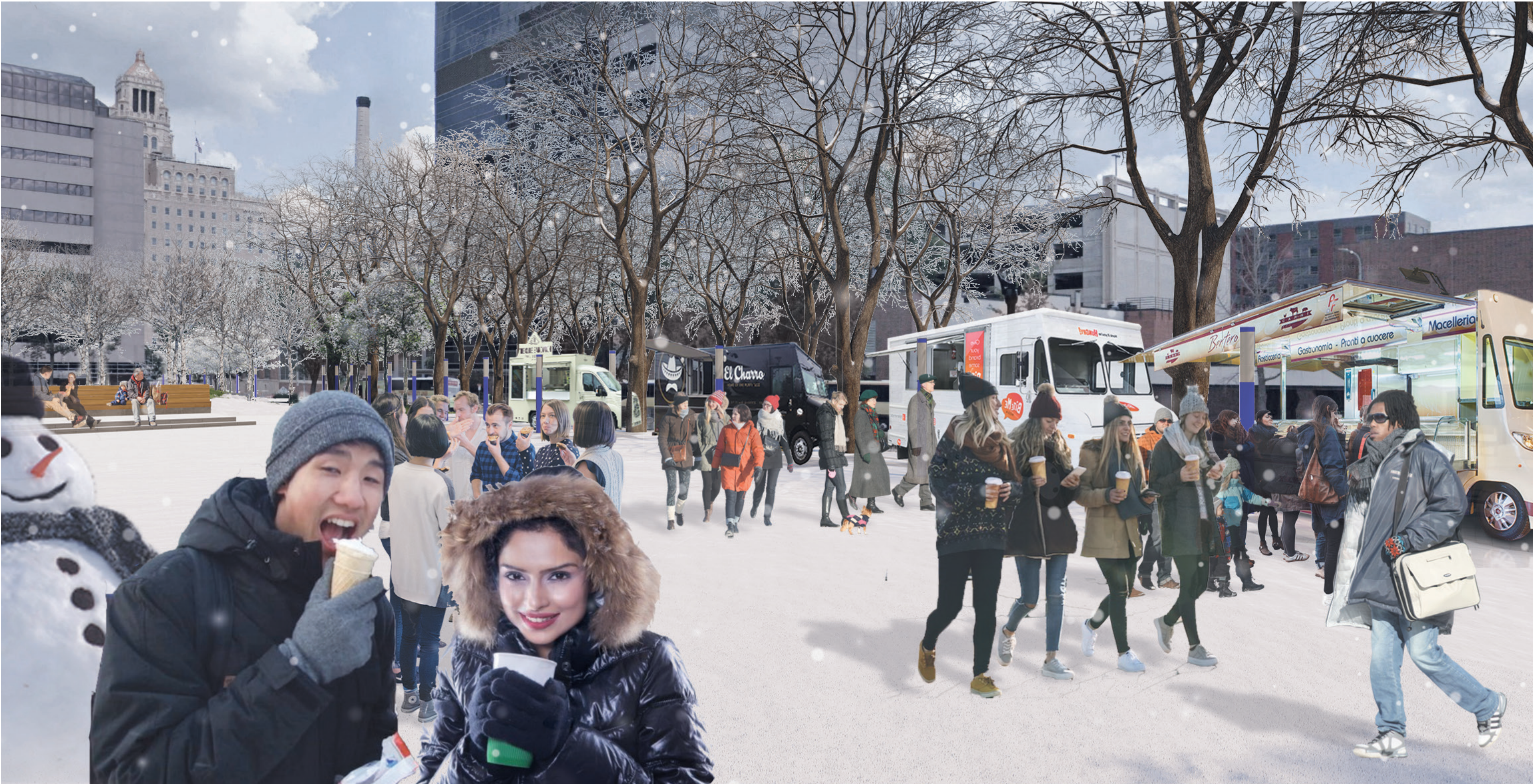


View of 2nd Ave looking north from 5th St

DISCOVERY WALK



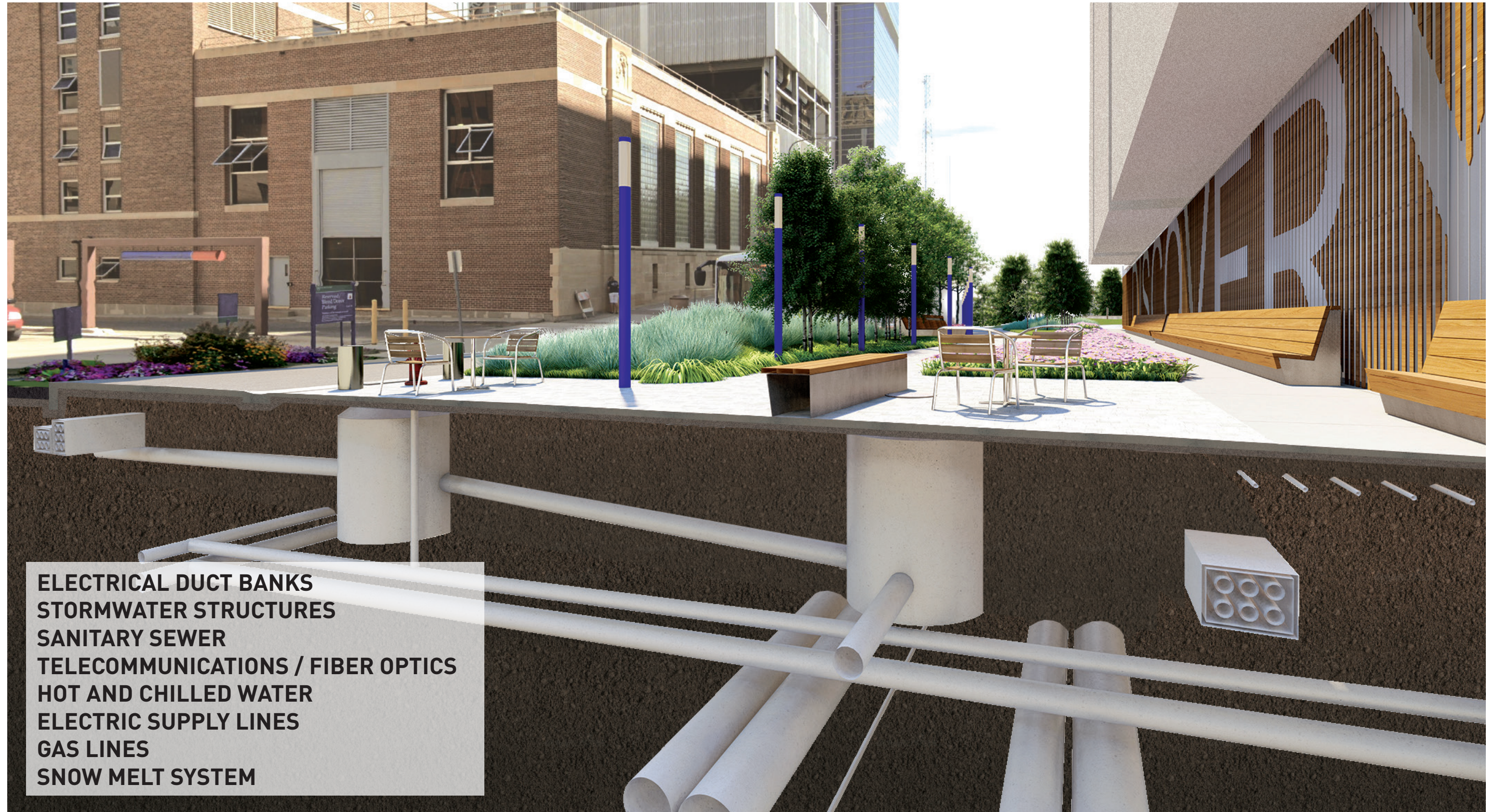
DISCOVERY WALK CREATES A NEW **CENTRAL FOOD TRUCK PLAZA** FEATURING LOCAL CUISINE AND UNIQUE OUTDOOR PUBLIC DINING SPACES SURROUNDED BY GARDENS.



View of 2nd Ave looking north from 4th St  
DISCOVERY WALK



# INVESTING IN A NEW **NETWORK OF UNDERGROUND SERVICES** TO MAKE THE CITY RUN.



**ELECTRICAL DUCT BANKS  
STORMWATER STRUCTURES  
SANITARY SEWER  
TELECOMMUNICATIONS / FIBER OPTICS  
HOT AND CHILLED WATER  
ELECTRIC SUPPLY LINES  
GAS LINES  
SNOW MELT SYSTEM**

View of 2nd Ave looking south from 2nd St

DISCOVERY WALK

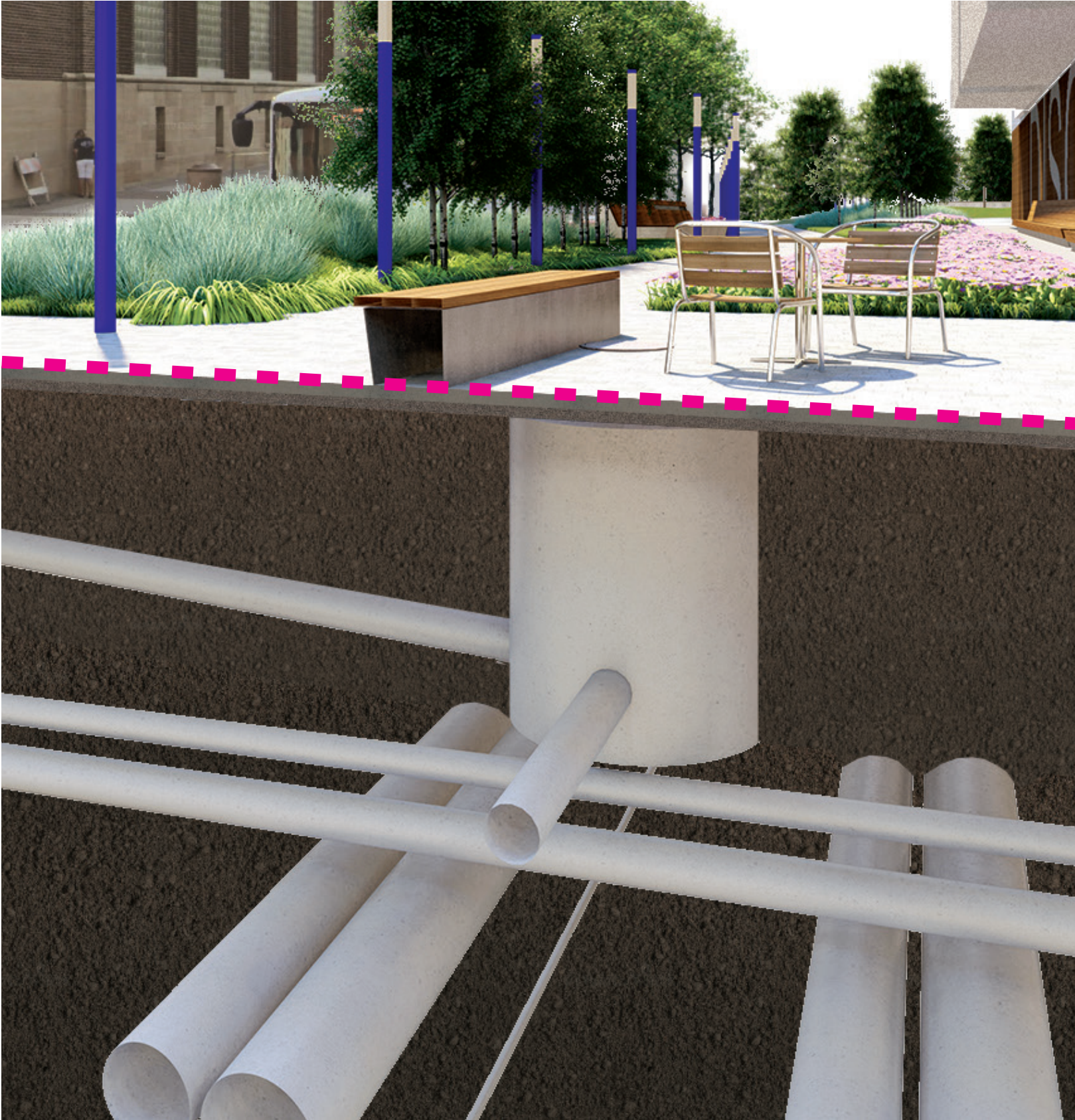


# PROJECT COST AND TIME ARE LIKE ICEBERGS...



25%  
OF  
COST

75%  
OF  
COST



30%  
OF  
TIME

70%  
OF  
TIME

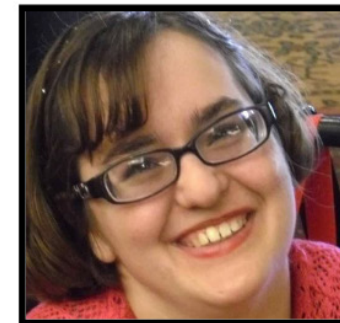


# ROCHESTER IS MODELING A NEW AND INFORMED DESIGN PROCESS BY COLLABORATING WITH A TALENTED AND KNOWLEDGABLE TEAM OF **LOCAL CO-DESIGNERS.**

- Represent diverse communities
- Develop ideas for inclusive design
- Develop ideas for inclusive programming
- Ensure accessible and welcoming spaces
- Create unique experiences
- Create a sense of cultural belonging
- Create places that encourage health



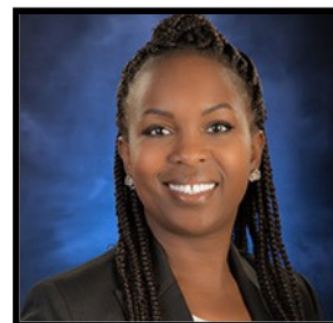
Wafa Elkhailifa



Krista Jacobson



Laurie Kumferman



Chao Mwatela



Lap Nguyen



Jenny Rho



Jeremy Westrum

Community engagements with the broader community and the stakeholder group have informed the project since it started in 2017.



**LOCAL ARTISTS WITH GLOBAL PERSPECTIVES CREATE INTEGRATED PUBLIC ART.**



**Zoe Cinel**

Originally from Italy, Zoe is an interdisciplinary artist and curator. Her interdisciplinary art practice is relational, participatory, and political and uses art to help people feel ownership of the public sphere, with the ultimate goal to connect them.



**Sophia Chai**

Shaped by her experience immigrating to the U.S. from South Korea as a teenager as well as years in New York, Sophia’s work often explores these feelings of contradiction, confusion, and ambivalence as a metaphor for that unsettling experience.



**Ayub HajiOmar**

Ayub is a multicultural artist particularly influenced by his background and travels. As an artist, he tries to bridge the gap between the misunderstood and those who try to understand them.



# Art: *POEMS IN THE PARK*, by Ayub HajiOmar



## ARTIST STATEMENT:

Using language and light, Poems in the Park is a collection of uplifting poems that creates a dialogue with those passing by.



THE DISCOVERY WALK TRANSFORMATION WILL **PROMOTE WELLNESS, THE LOCAL ENVIRONMENT, AND OUR UNIQUE COMMUNITY.**

**EXISTING**

SEATING: 65 LF

LANDSCAPING: 7,000 SF

PUBLIC SPACE: 2,000 SF

TREES: 39

WEATHER SHELTER AREAS: 0 SF

**PROPOSED**

SEATING: 1,000+ LF

LANDSCAPING: 28,000 SF

PUBLIC SPACE: 30,000 SF

TREES: 300+

WEATHER SHELTER: 2,800 SF



View of existing 2nd Ave looking north  
DISCOVERY WALK



View of proposed 2nd Ave looking north



# DISCOVERY WALK PROVIDES A SERIES OF **WEATHER SHELTERS** THAT EXTEND THE LENGTH OF TIME PEOPLE WILL WORK, DINE, AND PLAY OUTDOORS TOGETHER.



- Glass roof protects from rain and snow
- Wood screen to provide dappled shade
- Cooling system during the summer
- Heaters during the winter
- Integrated bench seating
- Swings (tethered) for fun!
- Integrated lighting
- Power outlets (work outside!)



CONNECTING **DISCOVERY WALK** TO **SOLDIERS FIELD** AND THE **ZUMBRO RIVER**  
THROUGH NEW GARDENS AND LOCAL ART INSTALLATIONS.

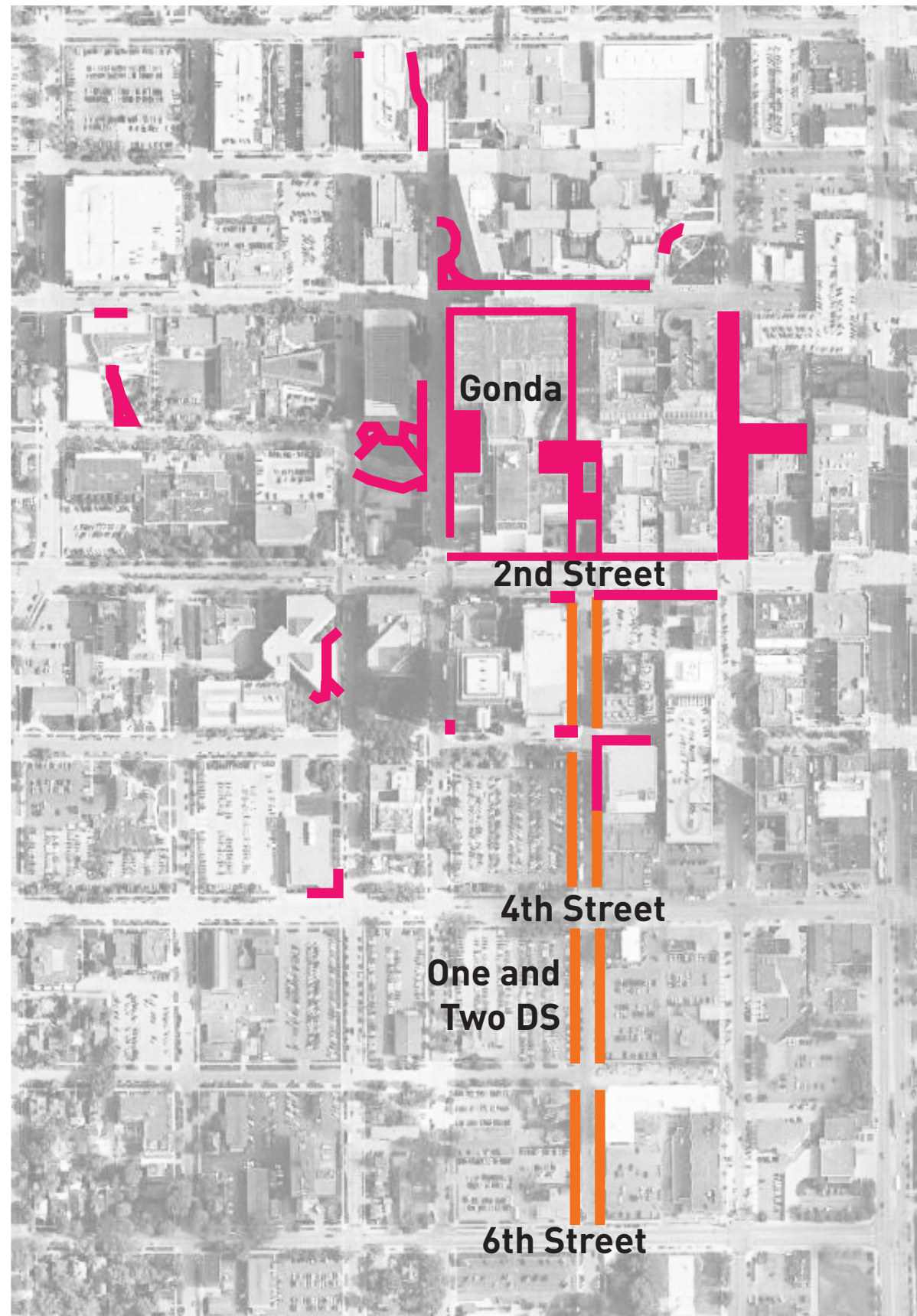


View of Soldiers Field Park looking south from 6th St

DISCOVERY WALK



# SNOW MELT SYSTEMS MAKE PUBLIC SPACES **SAFE** AND **SUSTAINABLE**



- Create safer sidewalk conditions for all & maintains ADA accessible routes
  - Reduces salt and chemical pollution from ending up in the Zumbro River
  - Sidewalks last longer
  - Healthier for plants in the streetscape
- Proposed snow melt in Discovery Walk
- Existing snow melt in Rochester



# POSSIBLE PROJECT INCLUSIONS

Weather shelters for outdoor work and play through all seasons



Snow melt in sidewalks create a safer and environmentally friendly tomorrow



Soldiers Field North Connects Discovery Walk to the Zumbro River





# SCHEDULE

Since 2015 the DMCC Board and City of Rochester have collaborated to create the vision and funding for Discovery Walk to become a reality.

## APPROVALS & PROCESS

- 2015 - DMC Development Plan adopted
- 2017 - Approval for Discovery Walk Schematic Design Phase
- 2018 - Discovery Walk Schematic Design Phase approved
- 2019 - Approval for Discovery Walk to progress to Design Development - Bidding phases
- 2020 - Design Development began

