



DMC
Destination
Medical Center
Rochester, MN

2024

IMPACT REPORT

A LETTER FROM DMC LEADERS

THE TIME FOR TRANSFORMATION IS NOW.

DEAR STAKEHOLDERS, PARTNERS AND COMMUNITY MEMBERS,

As we look back on the past year, we're proud and excited about the positive changes happening in Rochester. We're eager to share some of the progress shaping our city.

At the forefront is Mayo Clinic's Bold. Forward. Unbound. in Rochester initiative, which is transforming healthcare and establishing Rochester as a global leader in innovation. This major investment not only improves patient care but also boosts our local economy, attracting new businesses and creating opportunities for our community.

Another key development is the Link Bus Rapid Transit (BRT) project, which will modernize transportation in Rochester. This electric transit system will connect neighborhoods with jobs, entertainment, and public spaces, while encouraging new developments like the West Transit Village, turning a former parking lot into a lively, transit-oriented community.

DMC's infrastructure investments are coming together, making downtown Rochester more vibrant and welcoming. Peace Plaza, Chateau Theatre, and the aquatics center at Soldiers Field are now favorite spots for residents and visitors. The completion of Discovery Walk marks another milestone, linking healthcare innovation, business, and community while connecting downtown to Soldiers Field and nearby neighborhoods.

Looking ahead, the development of Rochester's riverfront will unlock the potential of one of our city's natural treasures. It will offer new opportunities for recreation, housing, entertainment, and retail.

This incredible transformation is a result of collaboration, shared vision, and innovation. We're deeply grateful to our partners, stakeholders, and Rochester residents for your unwavering support. Together, we're building a brighter future, and the best is yet to come.

SINCERELY,

PAM WHELOCK
DMCC Chair

DR. CLARK OTLEY
DMC EDA President

PATRICK SEEB
DMC EDA Executive Director

HEAR WHAT OUR KEY LEADERS HAVE TO SAY

The partnership between the State of Minnesota and Destination Medical Center drives innovation and economic growth in Rochester. Together, we are transforming healthcare, creating jobs, and enhancing Minnesotans' quality of life. This collaboration underscores our commitment to a bright future for all residents and communities across the state.

TIM WALZ

Governor of Minnesota

Mayo Clinic's Bold. Forward. Unbound. initiative marks a significant transformation for Rochester. This expansion advances healthcare, drives economic growth, spurs innovation, and is a platform for community development. The collaboration between the City of Rochester and Destination Medical Center ensures that our city continues to thrive, offering unparalleled opportunities and a high quality of life for our residents.

KIM NORTON

Mayor of Rochester

DMC's continued success is crucial to the success of Olmsted County as a whole. As downtown Rochester continues to grow more vibrant and active, our whole region benefits with the job opportunities, nightlife, economic demand, and expanding tax base that this growth provides. Together we thrive.

MARK THEIN

Olmsted County Board of Commissioners Chair

Through Bold. Forward. Unbound. in Rochester, we are creating radically different spaces that seamlessly blend inpatient, outpatient, digital, and physical care to transform healthcare experiences for our patients, their families, and our staff. Simultaneously, we are collaborating with Destination Medical Center initiative to transform downtown Rochester for the benefit of our patients, partners, neighbors, and community members. Together, we are continuing to differentiate Rochester, Olmsted County, and the state of Minnesota as a global healthcare destination where people can thrive for generations to come.

GIANRICO FARRUGIA, M.D.

President and CEO, Mayo Clinic



WHAT IS DESTINATION MEDICAL CENTER?

DESTINATION MEDICAL CENTER IS A CATALYST FOR ECONOMIC GROWTH, INNOVATION, AND COMMUNITY DEVELOPMENT IN ROCHESTER, MINNESOTA.

Established to support the long-term expansion of Mayo Clinic, DMC works to create a dynamic urban environment that attracts investment, promotes business growth, and enhances the quality of life for residents and visitors.

By focusing on infrastructure improvements, job creation, and sustainable, equitable development, DMC is transforming Rochester into a global destination for healthcare, technology, and innovation. The organization's strategic investments in transportation, public spaces, and mixed-use development stimulate economic activity, boost local businesses, and foster a thriving life science ecosystem. Through these efforts, DMC is shaping a future where Rochester continues to grow and evolve, ensuring the city remains a vibrant, inclusive place to live, work, and visit.



TABLE OF CONTENTS

6—7..... INVESTING IN INFRASTRUCTURE
DMC was built to invest in public infrastructure, public realm, transportation, and housing.

8—9..... IMPROVING LIVES
Building capacity through sustainability, equity, historic preservation, and delivering experience.

10—11... ATTRACTING GROWTH
Attracting growth through the lens of Building Awareness, Building Infrastructure, and Building an Ecosystem.

12—13... BOLD. FORWARD. UNBOUND. IN ROCHESTER
A bold initiative to transform healthcare and improve patient care.



INVESTING IN INFRASTRUCTURE

COMPLETED PROJECTS:



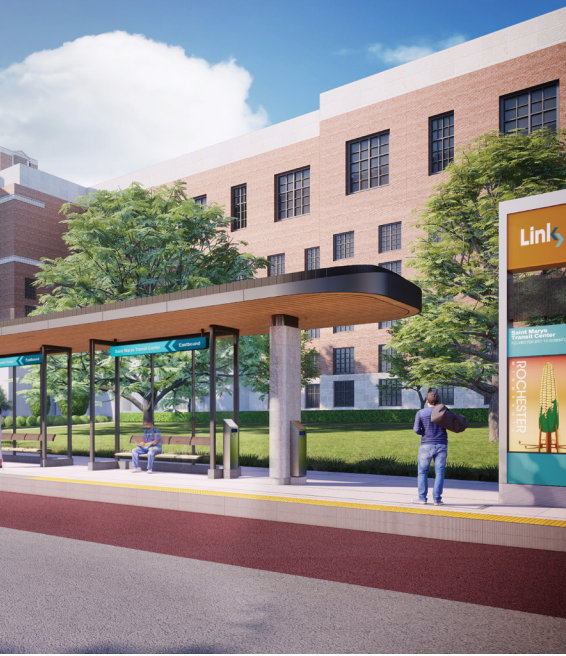
SOLDIERS FIELD

The recent enhancements to Soldiers Field Memorial Park have significantly enriched the Rochester community. Upgraded athletic facilities, new aquatic amenities, and accessible park play equipment have transformed the park into a more vibrant and inclusive destination. These improvements support a broader range of activities, from sports and swimming to family gatherings, while also ensuring accessibility for all residents. By revitalizing this cherished landmark, the upgrades have strengthened community bonds, honored the park's historical significance, and enhanced the quality of life for everyone in Rochester.

DISCOVERY WALK

The completion of Discovery Walk marks a significant milestone. This vibrant corridor seamlessly connects downtown with Soldiers Field, promoting walkability and enhancing the urban experience. Featuring green spaces, public art, and innovative design, Discovery Walk creates an inviting environment for residents and visitors. This project not only fosters community engagement and wellness but also stimulates economic growth.

ONGOING PROJECTS:



LINK BUS RAPID TRANSIT

Link Bus Rapid Transit represents a transformative development for Rochester. Construction will begin in the spring of 2025, marking a significant milestone for the city. Link will provide efficient, sustainable transportation, connecting key areas and reducing traffic congestion. This system will enhance mobility, spur economic growth, and contribute to a more connected and livable city.

RIVERFRONT

The Riverfront project will transform the Zumbro River area into a vibrant destination. It will feature new recreational spaces, housing, retail, and entertainment options, enhancing access to nature and creating opportunities for community engagement, economic growth, and urban revitalization.

6TH STREET BRIDGE

The 6th Street Bridge will create access to improve connectivity for pedestrians, cyclists, and vehicles. It will enhance access to downtown, parks, and neighborhoods, supporting future growth and meeting the city's evolving transportation needs.

WEST TRANSIT VILLAGE

The West Transit Village will be an innovative real estate development in Rochester. Partnering with Mayo Clinic, Kraus Anderson, and Aeon, this project will create a vibrant, transit-oriented community at the western terminus of the Link Bus Rapid Transit line. The development will feature a mix of residential, commercial, and recreational spaces, including senior housing.



IMPROVING LIVES



DELIVERING EXPERIENCES

A robust retail, dining, and entertainment scene is critical to a prosperous downtown. DMC is committed to cultivating a vibrant downtown to encourage support of local businesses and to stimulate economic growth. Along with providing social spaces for community engagement, they enhance the overall quality of life and contribute to a unique urban experience. A dynamic mix of shops, restaurants, and cultural venues ensures that our downtown remains a thriving hub of activity, day and night, for everyone to enjoy.

HARNESSING TOMORROW

The expansion of Rochester's downtown building energy transition project into a cutting-edge thermal energy network, is a cornerstone of the City's commitment to sustainability and innovation. This system efficiently distributes heating and cooling across multiple buildings, reducing energy consumption and lowering greenhouse gas emissions. By investing in this technology, Rochester is paving the way for a greener future, supporting economic growth, and enhancing the resilience of our urban infrastructure, making our city more sustainable and environmentally responsible.



PRESERVING YESTERDAY

DMC is committed to preserving the historic charm of downtown Rochester. By supporting the Historic Preservation District, DMC ensures that the city's rich architectural heritage is maintained while promoting adaptive reuse and modernization. This initiative not only safeguards our cultural legacy but also stimulates economic growth by attracting tourism and new investments, creating a vibrant, historically enriched downtown that blends the past with the future.

ENGAGING STAKEHOLDERS

The City of Rochester received the Bloomberg Philanthropies Global Mayors Challenge award in 2022, recognizing our innovative approach to boosting economic mobility for Black, Indigenous, and People of Color (BIPOC) women. Using Co-design, women of color and industry partners created Equity in the Built Environment. The program aims to support BIPOC women through careers in all phases of the built environment and construction. By supporting equity centered organizational changes for industry employers and providing targeted training, mentorship and employment opportunities, we aim to create a more inclusive and equitable workforce, driving sustainable economic growth and community development.



ATTRACTING GROWTH



DMC AROUND THE WORLD

WE ARE GROWING AND DIVERSIFYING ROCHESTER'S ECONOMY

This will create new career opportunities, a stronger tax base, and increased local investment. By focusing on building best-in-class physical infrastructure and fostering a thriving life science ecosystem, Rochester is positioning itself as a long-term destination for investment. These efforts will ensure that the city remains competitive and attractive on both national and global levels well into the future.



KEY RELATIONSHIPS

- + Rochester Area Economic Development, Inc.
- + Mayo Clinic Innovation Exchange
- + Mayo Clinic_Platform
- + Medical Alley



BOLD. FORWARD. UNBOUND. IN ROCHESTER

A VISION FOR UNPRECEDENTED GROWTH

Bold. Forward. Unbound. in Rochester is a multiyear strategic initiative to advance Mayo Clinic's overall Bold. Forward. strategy to Cure, Connect and Transform healthcare for the benefit of patients everywhere. It reimagines Mayo Clinic's downtown campus and is positioned to drive unparalleled growth in Rochester. Destination Medical Center is proud to collaborate with Mayo Clinic on this transformative journey. Together, we will support the expansion with strategic infrastructure investments and creating a thriving life science ecosystem. DMC's role includes enhancing urban development, improving transportation networks, and facilitating community engagement, ensuring that the benefits of this growth are widely felt. This partnership underscores our commitment to making Rochester a global destination for health and innovation, where cutting-edge research, exceptional patient care, and economic vitality converge to shape a vibrant future for all.

DMC's collaboration with Mayo Clinic is rooted in a shared commitment to fostering innovation, economic growth, and an enhanced quality of life for the Rochester community. Through strategic investments in infrastructure, transportation, and public spaces, DMC is creating an environment that supports Mayo Clinic's expansion while ensuring that the benefits extend beyond the medical campus.

Projects such as the Link Bus Rapid Transit, Discovery Walk, and Riverfront development will complement Mayo Clinic's growth by improving connectivity, accessibility, and livability in Rochester. DMC's efforts to attract private investment and nurture partnerships will further ensure that this unprecedented growth translates into lasting economic and community development, solidifying Rochester's status as America's City for Health. Together, Mayo Clinic and DMC are paving the way for a brighter, more prosperous future.



DMC BOARD MEMBERS AND STAFF

DMC CORPORATION BOARD OF DIRECTORS

PAMELA WHELOCK Board Chair

KIM NORTON Board Vice Chair, Mayor, City of Rochester

MARK THEIN Board Treasurer, Olmsted County Board of Commissioners

PAUL WILLIAMS Board Secretary, President & CEO, Project for Pride in Living

DOUG M. BAKER, JR. Mayo Clinic Trustee and Co-founder E2SG Partners

JAMES CAMPBELL Former CEO of Wells Fargo Minnesota

BROOKE CARLSON President, Rochester City Council

R.T. RYBAK Former Mayor, City of Minneapolis; President & CEO, Minneapolis Foundation

DMC ECONOMIC DEVELOPMENT AGENCY BOARD OF DIRECTORS

CLARK OTLEY, M.D. Board President, Chief Medical Officer, Mayo Clinic Platform

DENNIS DAHLEN Chief Financial Officer, Mayo Clinic

TRACI DOWNS, PH.D. Board Chair, Collider Foundation

TOM FISHER Director, Minnesota Design Center and Dayton-Hudson Chair in Urban Design, University of Minnesota

ROBERTA DRESSEN President and CEO, Medical Alley Association

JOSELYN RAYMUNDO, PHARM.D. Founder, Rochester Home Infusion

PATRICK SEEB Executive Director, DMC Economic Development Agency

MARY JO WILLIAMSON Chief Administrative Officer, Mayo Clinic Collaborative Services

DMC ECONOMIC DEVELOPMENT AGENCY STAFF

PATRICK SEEB Executive Director

ALLISON BOWMAN Program Manager

RATANAK UDDAM CHEA Data Research and Analytics Coordinator

WAFI ELKHALIFA Equitable Economic Development Coordinator

MICHAEL FLYNN Senior Director, Economic Development

LAUREN JENSEN Energy and Sustainability Manager

KYLLE JORDAN Business Development Manager

CATHERINE MALMBERG Director, Public Infrastructure & Development Strategy

GENO PALAZZARI Communications Manager

CODY POGALZ Administrative Coordinator

JAMIE ROTHE Director, Public Experience for Strategic Infrastructure

CHRIS SCHAD Director, Business Development

SCARLET TIPPETTS Administrative Assistant

ANNA ZIMBELMAN Events and Marketing Specialist



ROCHESTER CONTINUES TO RANK AS
**ONE OF THE BEST PLACES
TO LIVE IN AMERICA**



ROCHESTER, MN

**TOP 3
BEST PLACES
TO LIVE**

Livability 2022

**2021
GLOBAL
MAYORS
CHALLENGE**

Bloomberg Philanthropies

**MINNESOTA'S FIRST
LEED GOLD CITY**

U.S. Green Building Council



MAYO CLINIC IN ROCHESTER

**NUMBER 1 HOSPITAL
IN THE NATION**

U.S. News and World Reports, 2022-23

**MAYO CLINIC CHILDREN'S
CENTER IN ROCHESTER
RANKED NUMBER 1
HOSPITAL IN MINNESOTA
AND THE 5-STATE REGION OF
IA, MN, ND, SD, WI**

U.S. News & World Report 2022-2023 "Best Children's Hospitals"



DMC

Destination Medical Center

195 S. Broadway, Rochester, MN 55904

For more information, contact the
DMC Economic Development Agency at
info@dmc.mn or call **507-216-9720**.

Sign up for the DMC newsletter at dmc.mn

