



DMC Corporation Board of Directors Executive Committee Meeting

Friday, March 13, 2026

11:00 A.M.



2025 DMC Investment Report

March 2026



DMC

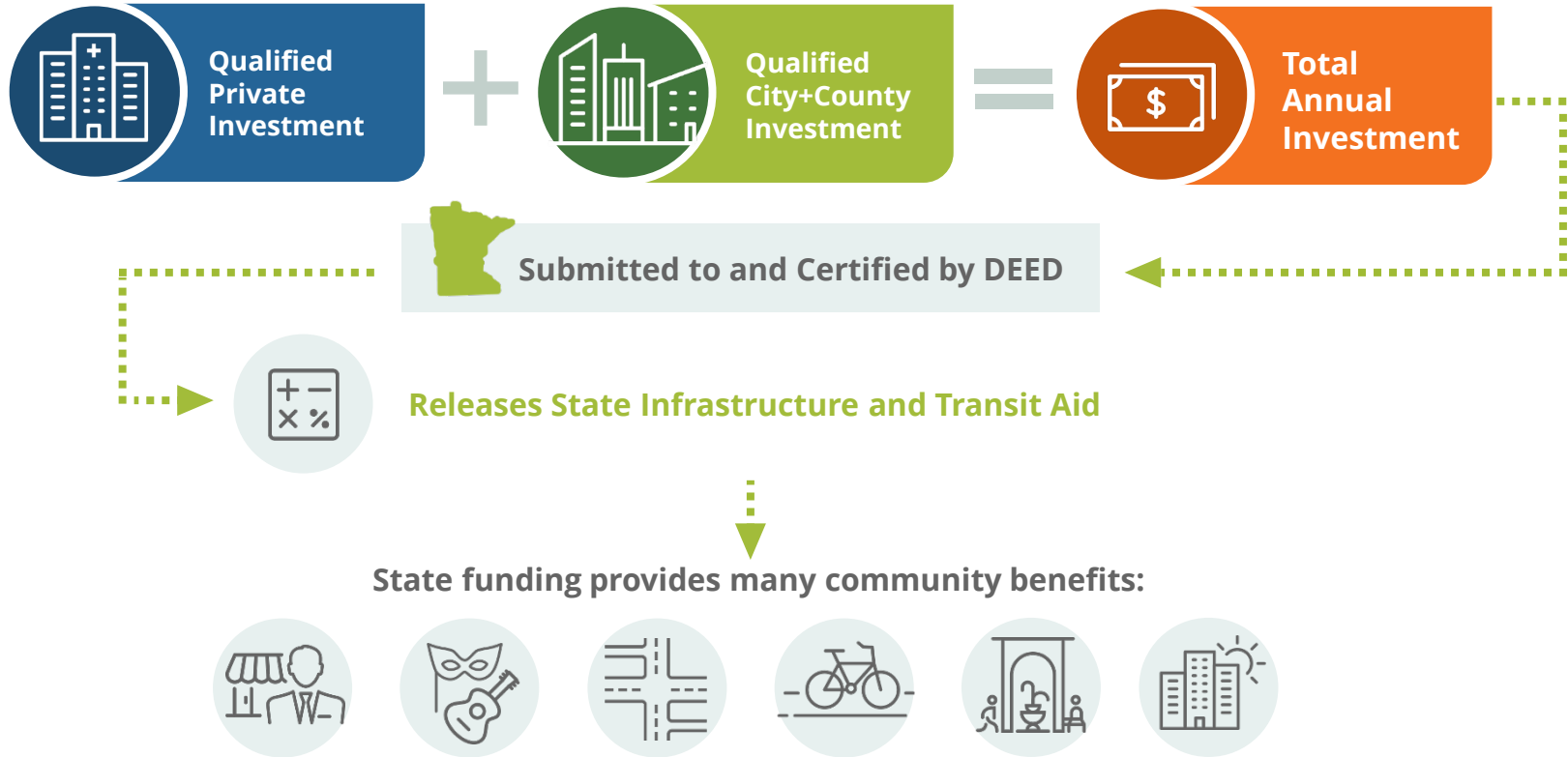
Destination Medical Center
Rochester, MN

TODAY

- 1 Overview
- 2 Mayo Clinic Investments
- 3 Non-Mayo Clinic Investments
- 4 Authorization of Report to DEED



DMC ANNUAL STATE AID FORMULA



2025 Total Qualifying Private Investments

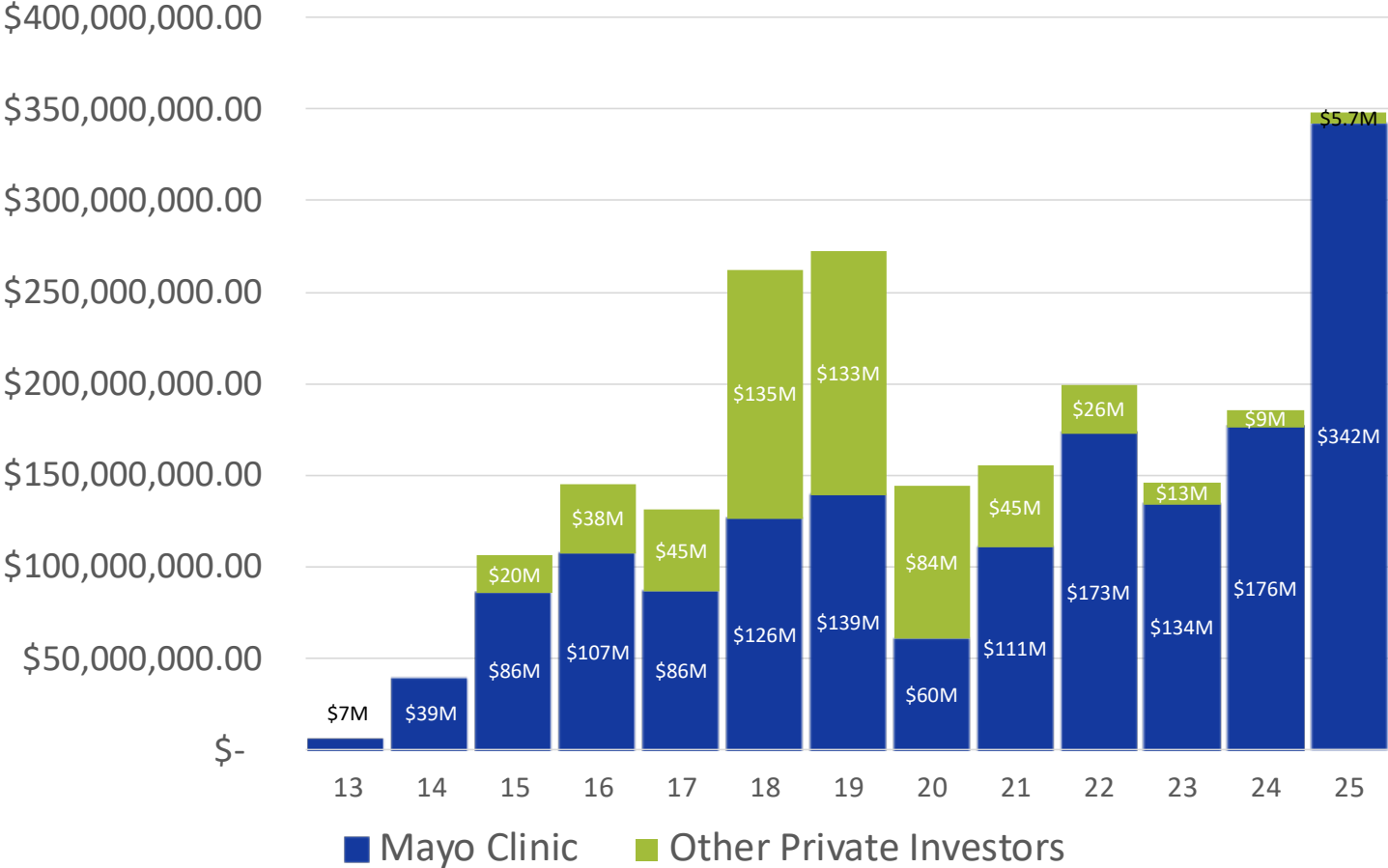
- ✓ Mayo Clinic Investment
\$342.3M

- ✓ Non-Mayo Clinic Private Investment
\$5.7M

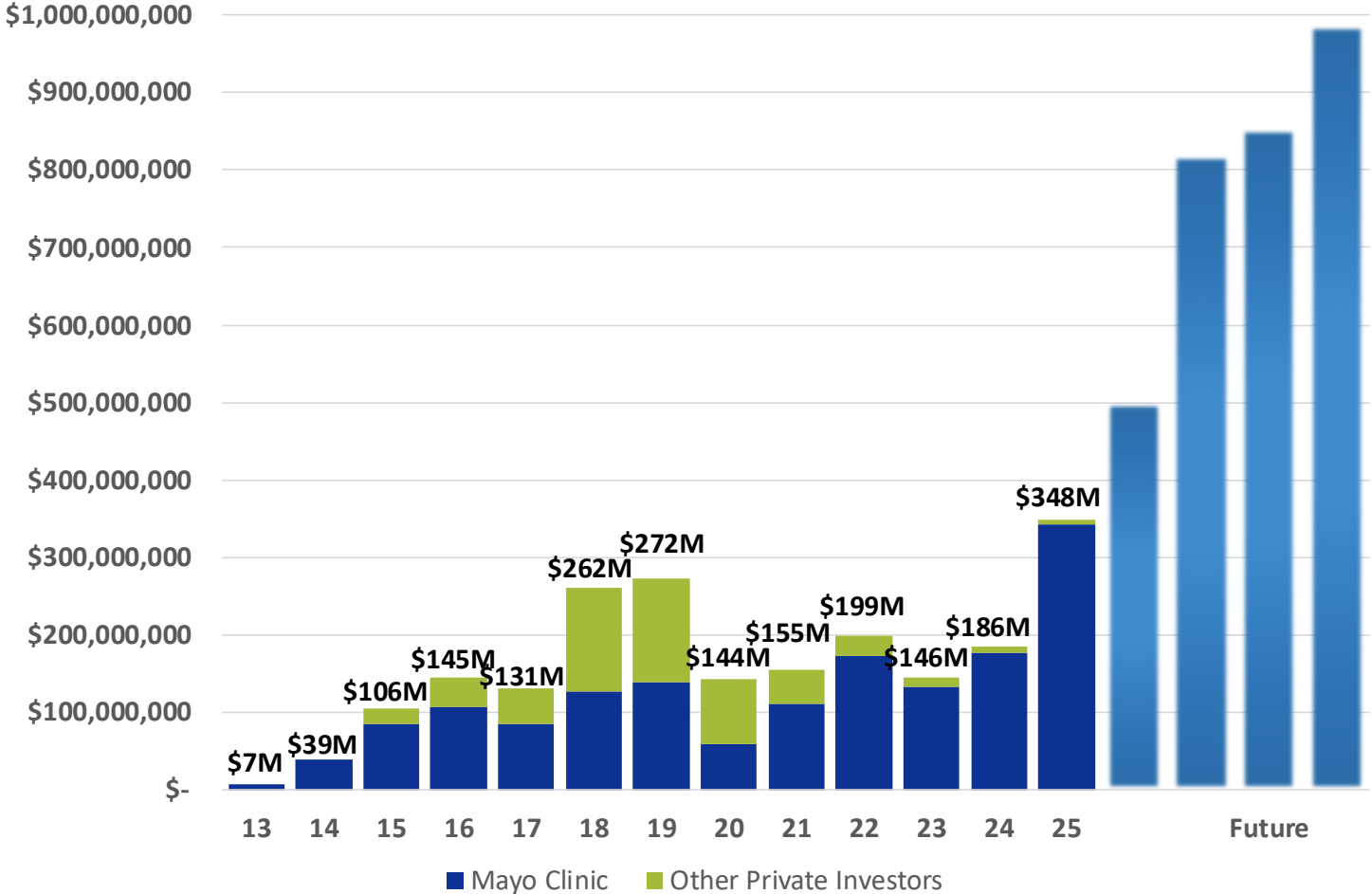


Annual DMC Private Investment

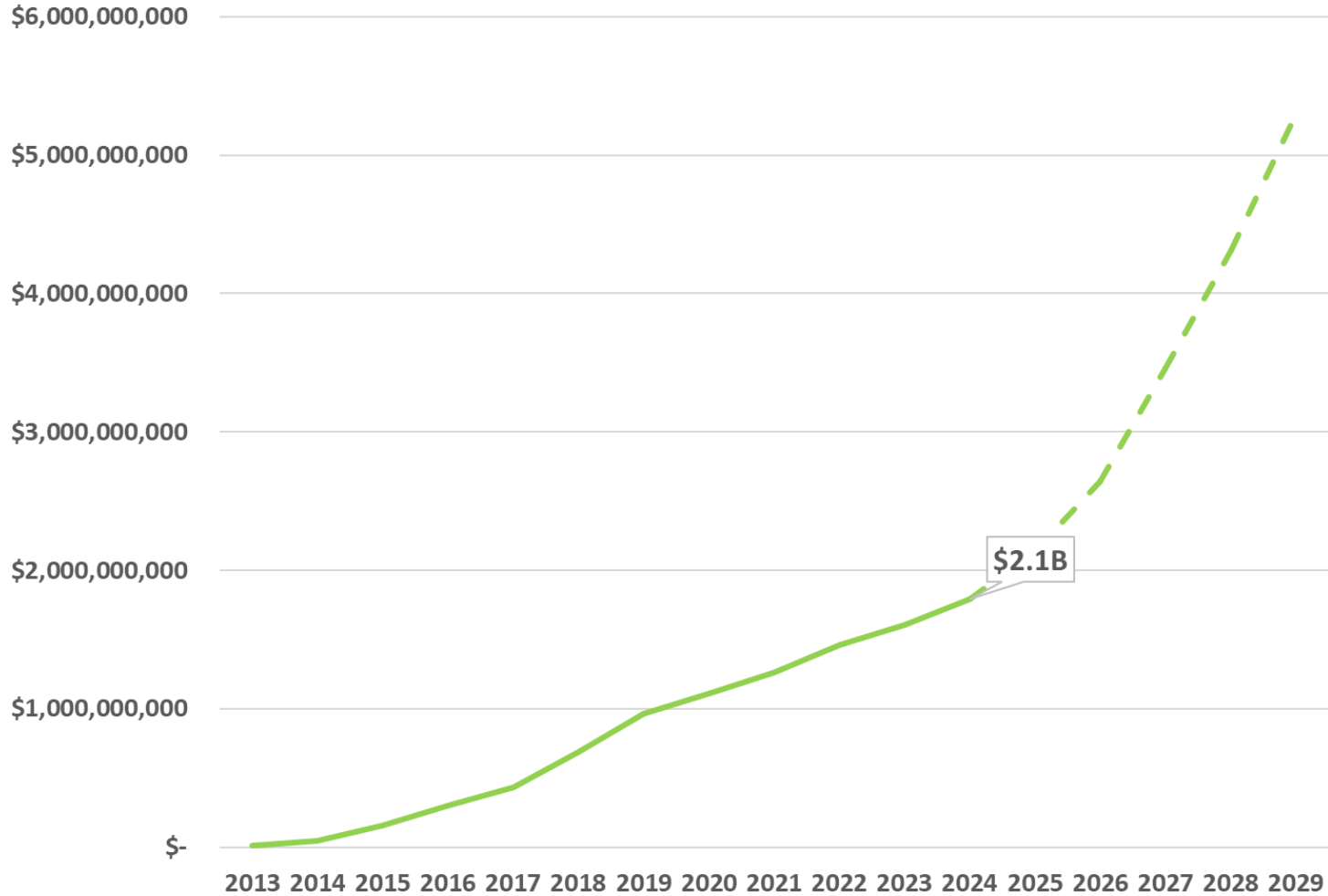
TOTAL THROUGH 2025: \$2.1 Billion



Annual DMC Private Investment



Cumulative Private Investment





Non-Mayo Clinic 2025 Investments

Highlights

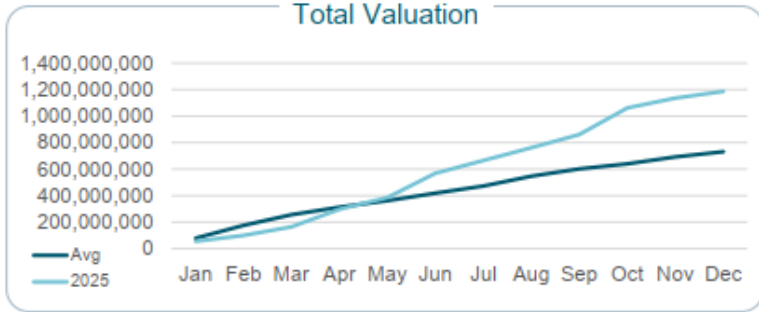
- ✓ \$5.7M invested in DMC District in 2025
- ✓ \$554M invested since 2015
- ✓ Recently completed and anticipated developments:
 - First & Banks Apartments
 - CityWalk Apartments
 - WTV Liner Housing (Aeon)
 - Civic Center North Apartments (Sherman)
 - Mayflower Apartments (Gerrard)



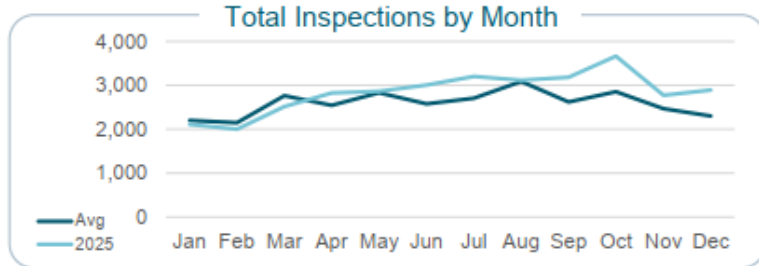
2025 City-wide Private Investment



Dec 2025 Development Services Report Building Division



Category	Valuation	% Change
Commercial	\$453,719,257	▲270%
Residential	\$128,592,976	▼-33%
Alterations	\$410,314,006	▲58%
Trades	\$193,858,147	▲24%



Commercial

Permits issued YTD	500	▲17%
Inspections this month	1,029	▲23%

Residential

Permits issued YTD	3,044	▲83%
Inspections this month	1,862	▲27%

Trades

Permits issued YTD	11,195	▲7%
--------------------	--------	-----

Plan Review (stats from previous month)

Commercial Plans Submitted (Bld/Add/Alt)	Commercial Review Time Summary	Residential Plans Submitted (Bld/Add/Alt)	Residential Review Time Summary
37	<ul style="list-style-type: none"> ≤1 wks: 8% 2 weeks: 30% 3 weeks: 35% >3 weeks: 27% 	279	<ul style="list-style-type: none"> ≤2 week: 100% <3 weeks: 0%





MAYO CLINIC

2025 INVESTMENTS

HIGHLIGHTS

Doug Holtan, Chair – Facilities and Support Services

DMCC Executive Committee
March 13, 2026

MAYO CLINIC 2025 INVESTMENTS

- Invested \$342.3M in Rochester in 2025, an increase of 94% over 2024
- Hired 12,400 new employees enterprise-wide in 2025
- Investments in infrastructure that support the Practice, staff, patients, community

PRACTICE INVESTMENTS

- Andersen Building
- Cardiovascular ICU at Saint Marys
- Neonatal Intensive Care Unit at Saint Marys



RESEARCH INVESTMENTS

Kellen Building

- Primary use for Research
- Construction complete in 2025
- Research labs moving into 9th floor in April 2026
- Reduced Energy Use Intensity to reduce energy use by 30%



UTILITY PLANT & UNDERGROUND INFRASTRUCTURE (UPUI)

- Prospect Utility Plant expansion: Weathertight by March 16
- Tunnels & Distribution
 - Have largest impact on other projects due to construction spanning many blocks.
 - Schedule dates have been maintained to limit disruption.
- Dig once coordination with city of Rochester

COLLABORATIONS WITH COMMUNITY

- Good Neighbor Policy
- Regular meetings with schools, churches, and businesses near campus
- \$7M in community contributions to local nonprofit organizations that help address local health priorities



BOLD. FORWARD. UNBOUND. IN ROCHESTER



2025 Report to DEED Highlights

Strategic DMC public investment enables continued private investment

- ✓ Cumulative private investment of more than \$2 billion
- ✓ DMC investments include mobility, housing, public realm
- ✓ Highest-ever annual Mayo Clinic investment—2X any other year
- ✓ Major *Bold. Forward. Unbound. in Rochester* investments ongoing + growing
- ✓ Current non-Mayo Clinic development in the pipeline includes workforce training facilities, housing, destination-worthy amenities